

ARG63835 anti-CFC1 / Cripto 1 antibody

Package: 100 µg
Store at: -20°C

Summary

Product Description	Goat Polyclonal antibody recognizes CFC1 / Cripto 1
Tested Reactivity	Ms
Predict Reactivity	Hu, Rat
Tested Application	IHC-P
Host	Goat
Clonality	Polyclonal
Isotype	IgG
Target Name	CFC1 / Cripto 1
Species	Human
Immunogen	HFTGRYCEHDQRRSEC
Conjugation	Un-conjugated
Alternate Names	Cryptic family protein 1; HTX2; CRYPTIC; DTGA2; CFC1B; Cryptic protein

Application Instructions

Application table	Application	Dilution
	IHC-P	1 - 2 µg/ml
Application Note	IHC-P: Antigen Retrieval: Steam tissue section in Citrate buffer (pH 6.0). * The dilutions indicate recommended starting dilutions and the optimal dilutions or concentrations should be determined by the scientist.	

Properties

Form	Liquid
Purification	Purified from goat serum by antigen affinity chromatography.
Buffer	Tris saline (pH 7.3), 0.02% Sodium azide and 0.5% BSA.
Preservative	0.02% Sodium azide
Stabilizer	0.5% BSA
Concentration	0.5 mg/ml
Storage instruction	For continuous use, store undiluted antibody at 2-8°C for up to a week. For long-term storage, aliquot and store at -20°C or below. Storage in frost free freezers is not recommended. Avoid repeated freeze/thaw cycles. Suggest spin the vial prior to opening. The antibody solution should be gently mixed before use.
Note	For laboratory research only, not for drug, diagnostic or other use.

Bioinformation

Database links

[GeneID: 12627 Mouse](#)

[Swiss-port # P97766 Mouse](#)

Background

This gene encodes a member of the epidermal growth factor (EGF)- Cripto, Frl-1, and Cryptic (CFC) family, which are involved in signalling during embryonic development. Proteins in this family share a variant EGF-like motif, a conserved cysteine-rich domain, and a C-terminal hydrophobic region. The protein encoded by this gene is necessary for patterning the left-right embryonic axis. Mutations in this gene are associated with defects in organ development, including autosomal visceral heterotaxy and congenital heart disease. Alternatively spliced transcript variants encoding multiple isoforms have been observed for this gene. [provided by RefSeq, Jul 2012]

Research Area

Signaling Transduction antibody

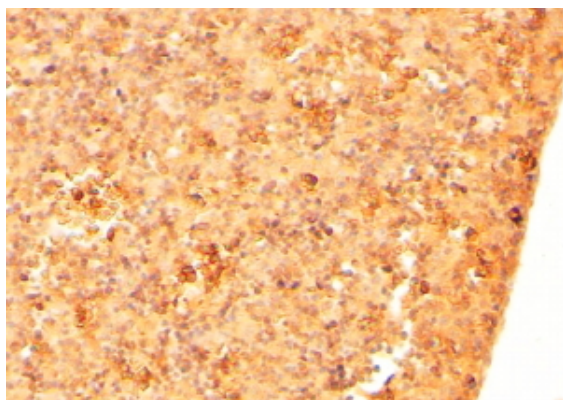
Calculated Mw

25 kDa

PTM

N-glycosylated.

Images



ARG63835 anti-CFC1 / Cripto 1 antibody IHC-P image

Immunohistochemistry: Paraffin embedded Mouse Embryo Liver. (Steamed antigen retrieval with citrate buffer pH 6) stained with ARG63835 anti-CFC1 / Cripto 1 antibody at 2 µg/ml dilution followed by HRP-staining.