

ARG63838 anti-RPS19 antibody

Package: 100 µg
Store at: -20°C

Summary

Product Description	Goat Polyclonal antibody recognizes RPS19
Tested Reactivity	Hu
Predict Reactivity	Ms, Rat, Cow, Dog
Tested Application	IHC-P, WB
Host	Goat
Clonality	Polyclonal
Isotype	IgG
Target Name	RPS19
Species	Human
Immunogen	C-KMVEKDQDGGRK
Conjugation	Un-conjugated
Alternate Names	DBA; 40S ribosomal protein S19; S19; DBA1

Application Instructions

Application table	Application	Dilution
	IHC-P	5 µg/ml
	WB	0.3 - 1 µg/ml
Application Note	WB: Recommend incubate at RT for 1h. IHC-P: Antigen Retrieval: Steam tissue section in Citrate buffer (pH 6.0). * The dilutions indicate recommended starting dilutions and the optimal dilutions or concentrations should be determined by the scientist.	

Properties

Form	Liquid
Purification	Purified from goat serum by antigen affinity chromatography.
Buffer	Tris saline (pH 7.3), 0.02% Sodium azide and 0.5% BSA.
Preservative	0.02% Sodium azide
Stabilizer	0.5% BSA
Concentration	0.5 mg/ml
Storage instruction	For continuous use, store undiluted antibody at 2-8°C for up to a week. For long-term storage, aliquot and store at -20°C or below. Storage in frost free freezers is not recommended. Avoid repeated freeze/thaw cycles. Suggest spin the vial prior to opening. The antibody solution should be gently mixed before use.

Bioinformation

Database links

[GeneID: 6223 Human](#)

[Swiss-port # P39019 Human](#)

Background

Ribosomes, the organelles that catalyze protein synthesis, consist of a small 40S subunit and a large 60S subunit. Together these subunits are composed of 4 RNA species and approximately 80 structurally distinct proteins. This gene encodes a ribosomal protein that is a component of the 40S subunit. The protein belongs to the S19E family of ribosomal proteins. It is located in the cytoplasm. Mutations in this gene cause Diamond-Blackfan anemia (DBA), a constitutional erythroblastopenia characterized by absent or decreased erythroid precursors, in a subset of patients. This suggests a possible extra-ribosomal function for this gene in erythropoietic differentiation and proliferation, in addition to its ribosomal function. Higher expression levels of this gene in some primary colon carcinomas compared to matched normal colon tissues has been observed. As is typical for genes encoding ribosomal proteins, there are multiple processed pseudogenes of this gene dispersed through the genome. [provided by RefSeq, Jul 2008]

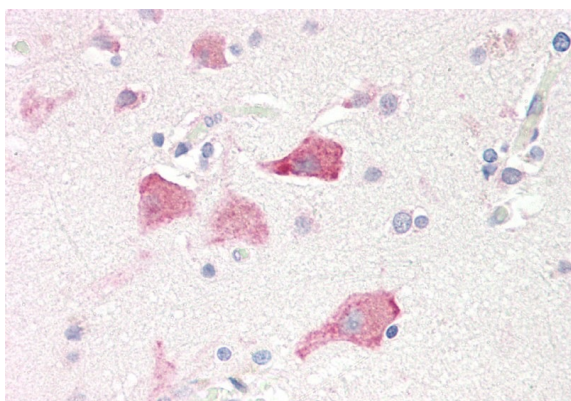
Research Area

Gene Regulation antibody

Calculated Mw

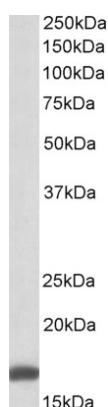
16 kDa

Images



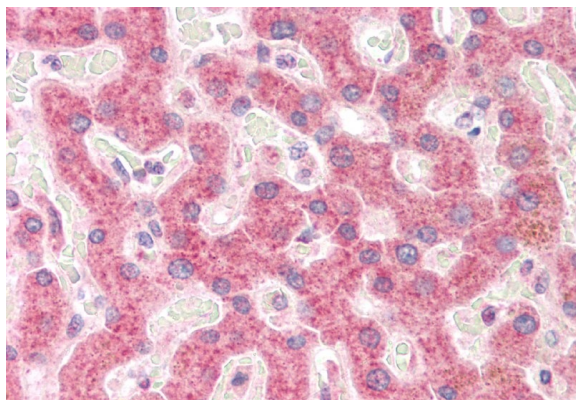
ARG63838 anti-RPS19 antibody IHC-P image

Immunohistochemistry: Paraffin-embedded Human cortex tissue. Antigen Retrieval: Steam tissue section in Citrate buffer (pH 6.0). The tissue section was stained with ARG63838 anti-RPS19 antibody at 5 µg/ml dilution followed by AP-staining.



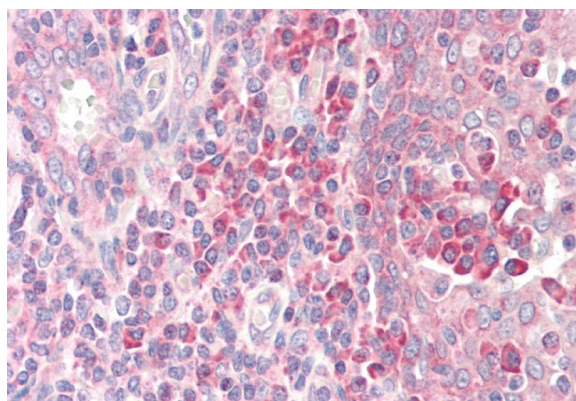
ARG63838 anti-RPS19 antibody WB image

Western blot: 35 µg of K562 cell lysate (in RIPA buffer) stained with ARG63838 anti-RPS19 antibody at 0.3 µg/ml dilution and incubated at RT for 1 hour.



ARG63838 anti-RPS19 antibody IHC-P image

Immunohistochemistry: Paraffin-embedded Human liver tissue.
Antigen Retrieval: Steam tissue section in Citrate buffer (pH 6.0). The tissue section was stained with ARG63838 anti-RPS19 antibody at 5 μ g/ml dilution followed by AP-staining.



ARG63838 anti-RPS19 antibody IHC-P image

Immunohistochemistry: Paraffin-embedded Human tonsil tissue.
Antigen Retrieval: Steam tissue section in Citrate buffer (pH 6.0). The tissue section was stained with ARG63838 anti-RPS19 antibody at 5 μ g/ml dilution followed by AP-staining.
