

## ARG63847 anti-USO1 antibody

Package: 100 µg  
Store at: -20°C

### Summary

Product Description	Goat Polyclonal antibody recognizes USO1
Tested Reactivity	Hu
Tested Application	WB
Host	Goat
Clonality	Polyclonal
Isotype	IgG
Target Name	USO1
Species	Human
Immunogen	C-DESEDPGKDLDH
Conjugation	Un-conjugated
Alternate Names	Protein USO1 homolog; VDP; TAP; Transcytosis-associated protein; Vesicle-docking protein; P115; General vesicular transport factor p115

### Application Instructions

Application table	Application	Dilution
	WB	1 - 3 µg/ml
Application Note	WB: Recommend incubate at RT for 1h. * The dilutions indicate recommended starting dilutions and the optimal dilutions or concentrations should be determined by the scientist.	

### Properties

Form	Liquid
Purification	Purified from goat serum by antigen affinity chromatography.
Buffer	Tris saline (pH 7.3), 0.02% Sodium azide and 0.5% BSA.
Preservative	0.02% Sodium azide
Stabilizer	0.5% BSA
Concentration	0.5 mg/ml
Storage instruction	For continuous use, store undiluted antibody at 2-8°C for up to a week. For long-term storage, aliquot and store at -20°C or below. Storage in frost free freezers is not recommended. Avoid repeated freeze/thaw cycles. Suggest spin the vial prior to opening. The antibody solution should be gently mixed before use.
Note	For laboratory research only, not for drug, diagnostic or other use.

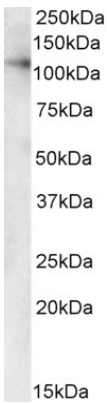
Database links	<a href="#">GeneID: 8615 Human</a> <a href="#">Swiss-port # O60763 Human</a>
Background	The protein encoded by this gene is a peripheral membrane protein which recycles between the cytosol and the Golgi apparatus during interphase. It is regulated by phosphorylation: dephosphorylated protein associates with the Golgi membrane and dissociates from the membrane upon phosphorylation. Ras-associated protein 1 recruits this protein to coat protein complex II (COPII) vesicles during budding from the endoplasmic reticulum, where it interacts with a set of COPII vesicle-associated SNAREs to form a cis-SNARE complex that promotes targeting to the Golgi apparatus. Transport from the ER to the cis/medial Golgi compartments requires the action of this gene product, GM130 and giantin in a sequential manner. [provided by RefSeq, Jul 2008]
Research Area	Signaling Transduction antibody
Calculated Mw	108 kDa
PTM	Phosphorylated in a cell cycle-specific manner; phosphorylated in interphase but not in mitotic cells. Dephosphorylated protein associates with the Golgi membrane; phosphorylation promotes dissociation.

Images



ARG63847 anti-USO1 antibody WB image

Western blot: K562 cell lysate (35 µg protein in RIPA buffer) stained with ARG63847 anti-USO1 antibody at 0.3 µg/ml dilution.



ARG63847 anti-USO1 antibody WB image

Western blot: 35 µg of Human liver lysate (in RIPA buffer) stained with ARG63847 anti-USO1 antibody at 1 µg/ml dilution and incubated at RT for 1 hour.