

ARG63851 anti-GOLGA6 / GLP antibody

Package: 100 µg
Store at: -20°C

Summary

Product Description	Goat Polyclonal antibody recognizes GOLGA6 / GLP
Tested Reactivity	Hu
Tested Application	IHC-P
Specificity	GeneID 55889 may be a pseudogene, while GeneID 342096 is thought to encode a functional protein.
Host	Goat
Clonality	Polyclonal
Isotype	IgG
Target Name	GOLGA6 / GLP
Species	Human
Immunogen	C-DLPKEKADGTEQ
Conjugation	Un-conjugated
Alternate Names	GOLGA6D; Putative golgin subfamily A member 6B; GOLGA

Application Instructions

Application table	Application	Dilution
	IHC-P	3 - 6 µg/ml
Application Note	IHC-P: Antigen Retrieval: Steam tissue section in Citrate buffer (pH 6.0). * The dilutions indicate recommended starting dilutions and the optimal dilutions or concentrations should be determined by the scientist.	

Properties

Form	Liquid
Purification	Purified from goat serum by antigen affinity chromatography.
Buffer	Tris saline (pH 7.3), 0.02% Sodium azide and 0.5% BSA.
Preservative	0.02% Sodium azide
Stabilizer	0.5% BSA
Concentration	0.5 mg/ml
Storage instruction	For continuous use, store undiluted antibody at 2-8°C for up to a week. For long-term storage, aliquot and store at -20°C or below. Storage in frost free freezers is not recommended. Avoid repeated freeze/thaw cycles. Suggest spin the vial prior to opening. The antibody solution should be gently mixed before use.
Note	For laboratory research only, not for drug, diagnostic or other use.

Bioinformation

Database links [GeneID: 55889 Human](#)
[Swiss-port # A6NDN3 Human](#)

Gene Symbol GOLGA6B

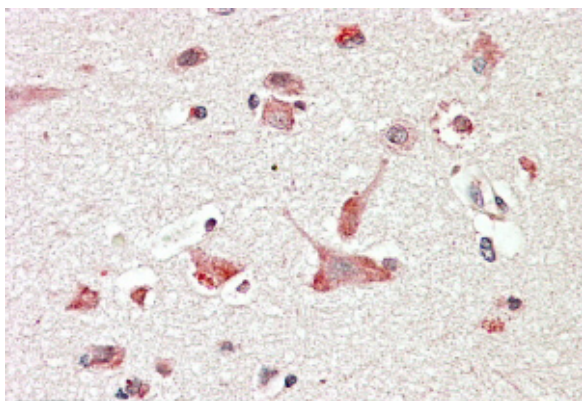
Gene Full Name golgin A6 family, member B

Background This gene is found in a large, low copy repeat sequence or duplicon that is found in multiple copies, which are greater than 90% similar, on chromosome 15. Duplicons are associated with deletions, inversions and other chromosomal rearrangements that underlie genomic disease. This gene is a member of the golgin gene family, whose protein products localize to the Golgi apparatus. The majority of the related gene copies are thought to be transcribed pseudogenes. It is not known whether this gene is a pseudogene or if it encodes a golgin protein. [provided by RefSeq, Jul 2008]

Research Area Signaling Transduction antibody

Calculated Mw 80 kDa

Images



ARG63851 anti-GOLGA6 / GLP antibody IHC-P image

Immunohistochemistry: paraffin embedded Human Cerebral Cortex. (Steamed antigen retrieval with citrate buffer pH 6) stained with ARG63851 anti-GOLGA6 / GLP antibody at 3.8 µg/ml dilution followed by AP-staining.