

ARG63857 anti-PCK2 / PEPCKM antibody

Package: 100 µg
Store at: -20°C

Summary

Product Description	Goat Polyclonal antibody recognizes PCK2 / PEPCKM
Tested Reactivity	Hu
Predict Reactivity	Ms, Rat, Cow, Dog, Pig
Tested Application	WB
Specificity	This antibody is expected to recognise isoform 1 (NP_004554) only, no cross-reactivity with PCK1.
Host	Goat
Clonality	Polyclonal
Isotype	IgG
Target Name	PCK2 / PEPCKM
Species	Human
Immunogen	KPWKPGDKPECAH
Conjugation	Un-conjugated
Alternate Names	PEPCK-M; Phosphoenolpyruvate carboxykinase [GTP], mitochondrial; PEPCK; EC 4.1.1.32; PEPCK2

Application Instructions

Application table	Application	Dilution
	WB	2 - 4 µg/ml
Application Note	WB: Recommend incubate at RT for 1h. * The dilutions indicate recommended starting dilutions and the optimal dilutions or concentrations should be determined by the scientist.	

Properties

Form	Liquid
Purification	Purified from goat serum by antigen affinity chromatography.
Buffer	Tris saline (pH 7.3), 0.02% Sodium azide and 0.5% BSA.
Preservative	0.02% Sodium azide
Stabilizer	0.5% BSA
Concentration	0.5 mg/ml
Storage instruction	For continuous use, store undiluted antibody at 2-8°C for up to a week. For long-term storage, aliquot and store at -20°C or below. Storage in frost free freezers is not recommended. Avoid repeated freeze/thaw cycles. Suggest spin the vial prior to opening. The antibody solution should be gently mixed before use.

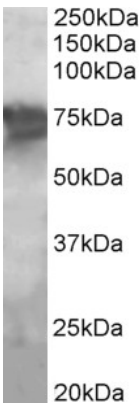
Note

For laboratory research only, not for drug, diagnostic or other use.

Bioinformation

Database links	GeneID: 5106 Human Swiss-port # Q16822 Human
Background	This gene encodes a member of the phosphoenolpyruvate carboxykinase (GTP) family. The protein is a mitochondrial enzyme that catalyzes the conversion of oxaloacetate to phosphoenolpyruvate in the presence of GTP. A cytosolic form encoded by a different gene has also been characterized and is the key enzyme of gluconeogenesis in the liver. The encoded protein may serve a similar function, although it is constitutively expressed and not modulated by hormones such as glucagon and insulin that regulate the cytosolic form. Alternatively spliced transcript variants have been described. [provided by RefSeq, Jul 2008]
Research Area	Cancer antibody; Cell Biology and Cellular Response antibody; Metabolism antibody; Signaling Transduction antibody
Calculated Mw	71 kDa

Images



ARG63857 anti-PCK2 / PEPCKM antibody WB image

Western blot: Human Liver lysate (35 µg protein in RIPA buffer) stained with ARG63857 anti-PCK2 / PEPCKM antibody at 2 µg/ml dilution.