

ARG63859 anti-EPB41L3 / DAL1 antibody

Package: 100 µg
Store at: -20°C

Summary

Product Description	Goat Polyclonal antibody recognizes EPB41L3 / DAL1
Tested Reactivity	Hu
Predict Reactivity	Ms, Rat, Dog
Tested Application	WB
Host	Goat
Clonality	Polyclonal
Isotype	IgG
Target Name	EPB41L3 / DAL1
Species	Human
Immunogen	C-HKETEITPEDGED
Conjugation	Un-conjugated
Alternate Names	DAL-1; Differentially expressed in adenocarcinoma of the lung protein 1; 4.1B; DAL1; Band 4.1-like protein 3

Application Instructions

Application table	Application	Dilution
	WB	0.3 - 1 µg/ml
Application Note	WB: Recommend incubate at RT for 1h. * The dilutions indicate recommended starting dilutions and the optimal dilutions or concentrations should be determined by the scientist.	

Properties

Form	Liquid
Purification	Purified from goat serum by antigen affinity chromatography.
Buffer	Tris saline (pH 7.3), 0.02% Sodium azide and 0.5% BSA.
Preservative	0.02% Sodium azide
Stabilizer	0.5% BSA
Concentration	0.5 mg/ml
Storage instruction	For continuous use, store undiluted antibody at 2-8°C for up to a week. For long-term storage, aliquot and store at -20°C or below. Storage in frost free freezers is not recommended. Avoid repeated freeze/thaw cycles. Suggest spin the vial prior to opening. The antibody solution should be gently mixed before use.
Note	For laboratory research only, not for drug, diagnostic or other use.

Bioinformation

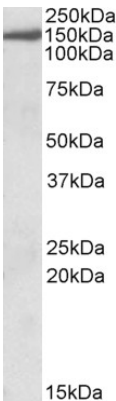
Database links	GeneID: 23136 Human Swiss-port # Q9Y2J2 Human
Gene Symbol	EPB41L3
Gene Full Name	erythrocyte membrane protein band 4.1-like 3
Function	Tumor suppressor that inhibits cell proliferation and promotes apoptosis. Modulates the activity of protein arginine N-methyltransferases, including PRMT3 and PRMT5. [UniProt]
Research Area	Cancer antibody; Signaling Transduction antibody
Calculated Mw	121 kDa

Images



ARG63859 anti-EPB41L3 / DAL1 antibody WB image

Western Blot: Human Brain lysate (35 µg protein in RIPA buffer) stained with ARG63859 anti-EPB41L3 / DAL1 antibody at 1 µg/ml dilution.



ARG63859 anti-EPB41L3 / DAL1 antibody WB image

Western blot: 35 µg of Human cerebellum lysate (in RIPA buffer) stained with ARG63859 anti-EPB41L3 / DAL1 antibody at 0.3 µg/ml dilution and incubated at RT for 1 hour.