

ARG63873 anti-CB1 Receptor antibody

Package: 100 µg
Store at: -20°C

Summary

Product Description	Goat Polyclonal antibody recognizes CB1 Receptor
Tested Reactivity	Rat
Predict Reactivity	Hu, Ms, Dog
Tested Application	WB
Specificity	This antibody is expected to recognise both reported isoforms. Isoform a (NP_057167.2; NP_001153732.1; NP_001153731.1; NP_001153730.1; NP_001153698.1) and isoform b (NP_149421.1).
Host	Goat
Clonality	Polyclonal
Isotype	IgG
Target Name	CB1 Receptor
Species	Human
Immunogen	C-HTSEDKVQVTRPDQ
Conjugation	Un-conjugated
Alternate Names	CB1K5; CNR; CB1R; Cannabinoid receptor 1; CB-R; CB1; CB1A; CANN6

Application Instructions

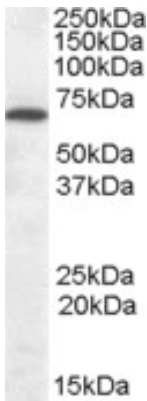
Application table	Application	Dilution
	WB	0.1 - 0.3 µg/ml
Application Note	WB: Recommend incubate at RT for 1h. * The dilutions indicate recommended starting dilutions and the optimal dilutions or concentrations should be determined by the scientist.	

Properties

Form	Liquid
Purification	Purified from goat serum by antigen affinity chromatography.
Buffer	Tris saline (pH 7.3), 0.02% Sodium azide and 0.5% BSA.
Preservative	0.02% Sodium azide
Stabilizer	0.5% BSA
Concentration	0.5 mg/ml
Storage instruction	For continuous use, store undiluted antibody at 2-8°C for up to a week. For long-term storage, aliquot and store at -20°C or below. Storage in frost free freezers is not recommended. Avoid repeated freeze/thaw cycles. Suggest spin the vial prior to opening. The antibody solution should be gently mixed before use.

Note	For laboratory research only, not for drug, diagnostic or other use.
Bioinformation	
Database links	GeneID: 25248 Rat Swiss-port # P20272 Rat
Background	This gene encodes one of two cannabinoid receptors. The cannabinoids, principally delta-9-tetrahydrocannabinol and synthetic analogs, are psychoactive ingredients of marijuana. The cannabinoid receptors are members of the guanine-nucleotide-binding protein (G-protein) coupled receptor family, which inhibit adenylate cyclase activity in a dose-dependent, stereoselective and pertussis toxin-sensitive manner. The two receptors have been found to be involved in the cannabinoid-induced CNS effects (including alterations in mood and cognition) experienced by users of marijuana. Multiple transcript variants encoding two different protein isoforms have been described for this gene. [provided by RefSeq, May 2009]
Research Area	Cell Biology and Cellular Response antibody; Metabolism antibody; Neuroscience antibody
Calculated Mw	53 kDa
PTM	Palmitoylation at Cys-415 is important for recruitment at both plasma membrane and lipid rafts.

Images



ARG63873 anti-CB1 Receptor antibody WB image

Western blot: Rat Brain lysate (35 µg protein in RIPA buffer) stained with ARG63873 anti-CB1 Receptor antibody at 0.1 µg/ml dilution.