

ARG63915 anti-Engrailed 2 antibody

Package: 100 µg
Store at: -20°C

Summary

Product Description	Goat Polyclonal antibody recognizes Engrailed 2
Tested Reactivity	Hu, Ms
Predict Reactivity	Dog, Rat
Tested Application	ICC/IF, WB
Host	Goat
Clonality	Polyclonal
Isotype	IgG
Target Name	Engrailed 2
Immunogen	C-NHSTTAKEGKSDSE
Conjugation	Un-conjugated
Alternate Names	Homeobox protein engrailed-2; Homeobox protein en-2; Hu-En-2

Application Instructions

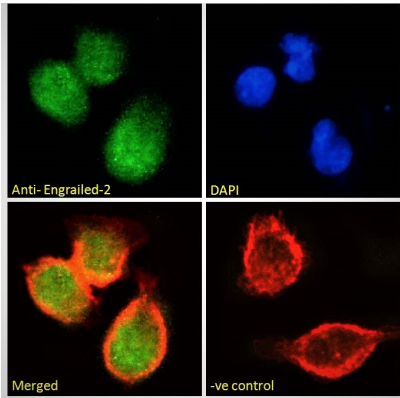
Application table	Application	Dilution
	ICC/IF	10 µg/ml
	WB	0.1 - 1 µg/ml
Application Note	WB: Recommend incubate at RT for 1h. * The dilutions indicate recommended starting dilutions and the optimal dilutions or concentrations should be determined by the scientist.	

Properties

Form	Liquid
Purification	Purified from goat serum by antigen affinity chromatography.
Buffer	Tris saline (pH 7.3), 0.02% Sodium azide and 0.5% BSA.
Preservative	0.02% Sodium azide
Stabilizer	0.5% BSA
Concentration	0.5 mg/ml
Storage instruction	For continuous use, store undiluted antibody at 2-8°C for up to a week. For long-term storage, aliquot and store at -20°C or below. Storage in frost free freezers is not recommended. Avoid repeated freeze/thaw cycles. Suggest spin the vial prior to opening. The antibody solution should be gently mixed before use.
Note	For laboratory research only, not for drug, diagnostic or other use.

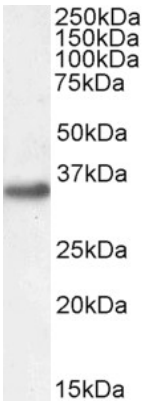
Database links	GeneID: 13799 Mouse
	GeneID: 2020 Human
	Swiss-port # P09066 Mouse
	Swiss-port # P19622 Human
Background	Homeobox-containing genes are thought to have a role in controlling development. In Drosophila, the 'engrailed' (en) gene plays an important role during development in segmentation, where it is required for the formation of posterior compartments. Different mutations in the mouse homologs, En1 and En2, produced different developmental defects that frequently are lethal. The human engrailed homologs 1 and 2 encode homeodomain-containing proteins and have been implicated in the control of pattern formation during development of the central nervous system. [provided by RefSeq, Jul 2008]
Research Area	Developmental Biology antibody; Gene Regulation antibody; Neuroscience antibody; Signaling Transduction antibody
Calculated Mw	34 kDa

Images



ARG63915 anti-Engrailed 2 antibody ICC/IF image

Immunofluorescence: Paraformaldehyde fixed HEK293 cells permeabilized with 0.15% Triton. Cells were stained with ARG63915 anti-Engrailed 2 antibody (green) at 10 µg/ml dilution for 1 hour. DAPI (blue) for nuclear staining. Phalloidin (red) for Actin filaments staining. Negative control: Unimmunized goat IgG (green) at 10 µg/ml dilution.



ARG63915 anti-Engrailed 2 antibody WB image

Western blot: 35 µg of Mouse brain lysate (in RIPA buffer) stained with ARG63915 anti-Engrailed 2 antibody at 1 µg/ml dilution and incubated at RT for 1 hour.