

ARG63924 anti-Prostaglandin E Receptor EP1 antibody

Package: 100 µg
Store at: -20°C

Summary

Product Description	Goat Polyclonal antibody recognizes Prostaglandin E Receptor EP1
Tested Reactivity	Hu
Tested Application	IHC-P
Host	Goat
Clonality	Polyclonal
Isotype	IgG
Target Name	Prostaglandin E Receptor EP1
Species	Human
Immunogen	C-DSRRRWGAHGPRS
Conjugation	Un-conjugated
Alternate Names	PGE2 receptor EP1 subtype; Prostanoid EP1 receptor; PGE receptor EP1 subtype; Prostaglandin E2 receptor EP1 subtype; EP1

Application Instructions

Application table	Application	Dilution
	IHC-P	1 - 5 µg/ml
Application Note	IHC-P: Antigen Retrieval: Steam tissue section in Citrate buffer (pH 6.0). * The dilutions indicate recommended starting dilutions and the optimal dilutions or concentrations should be determined by the scientist.	

Properties

Form	Liquid
Purification	Purified from goat serum by antigen affinity chromatography.
Buffer	Tris saline (pH 7.3), 0.02% Sodium azide and 0.5% BSA.
Preservative	0.02% Sodium azide
Stabilizer	0.5% BSA
Concentration	0.5 mg/ml
Storage instruction	For continuous use, store undiluted antibody at 2-8°C for up to a week. For long-term storage, aliquot and store at -20°C or below. Storage in frost free freezers is not recommended. Avoid repeated freeze/thaw cycles. Suggest spin the vial prior to opening. The antibody solution should be gently mixed before use.
Note	For laboratory research only, not for drug, diagnostic or other use.

Bioinformation

Database links

[GeneID: 5731 Human](#)

[Swiss-port # P34995 Human](#)

Background

The protein encoded by this gene is a member of the G protein-coupled receptor family. This protein is one of four receptors identified for prostaglandin E2 (PGE2). Through a phosphatidylinositol-calcium second messenger system, G-Q proteins mediate this receptor's activity. Knockout studies in mice suggested a role of this receptor in mediating algesia and in regulation of blood pressure. Studies in mice also suggested that this gene may mediate adrenocorticotrophic hormone response to bacterial endotoxin. [provided by RefSeq, Jul 2008]

Research Area

Signaling Transduction antibody

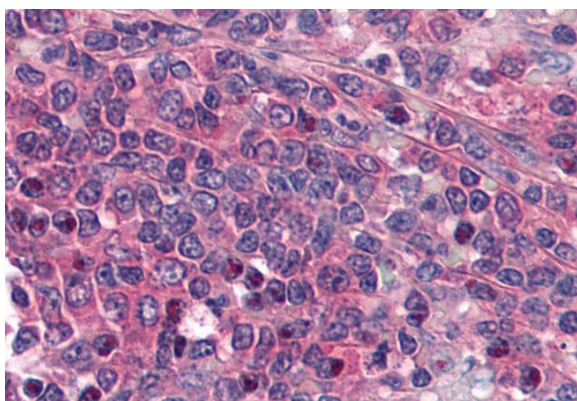
Calculated Mw

42 kDa

PTM

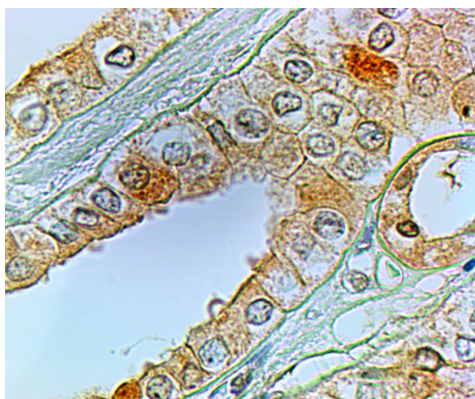
Phosphorylated.

Images



ARG63924 anti-Prostaglandin E Receptor EP1 antibody IHC-P image

Immunohistochemistry: Paraffin-embedded Human spleen tissue. Antigen Retrieval: Steam tissue section in Citrate buffer (pH 6.0). The tissue section was stained with ARG63924 anti-Prostaglandin E Receptor EP1 antibody at 5 µg/ml dilution followed by AP-staining.



ARG63924 anti-Prostaglandin E Receptor EP1 antibody IHC image

Immunohistochemistry: paraffin-embedded Human Kidney (Steamed antigen retrieval with citrate buffer pH 6) stained with ARG63924 anti-Prostaglandin E Receptor EP1 antibody at 2 µg/ml dilution, followed by HRP-staining.