

ARG63969 anti-Catalase antibody

Package: 100 µg, 50 µg
Store at: -20°C

Summary

Product Description	Goat Polyclonal antibody recognizes Catalase
Tested Reactivity	Hu, Ms
Predict Reactivity	Dog
Tested Application	IHC-P, WB
Host	Goat
Clonality	Polyclonal
Isotype	IgG
Target Name	Catalase
Species	Human
Immunogen	C-DKYNAEKPKNAIHT
Conjugation	Un-conjugated
Alternate Names	Catalase; EC 1.11.1.6

Application Instructions

Application table	Application	Dilution
	IHC-P	Assay - dependent
	WB	0.1 - 0.3 µg/ml
Application Note	WB: Recommend incubate at RT for 1h. IHC-P: Antigen Retrieval: Steam tissue section in Citrate buffer (pH 6.0). * The dilutions indicate recommended starting dilutions and the optimal dilutions or concentrations should be determined by the scientist.	

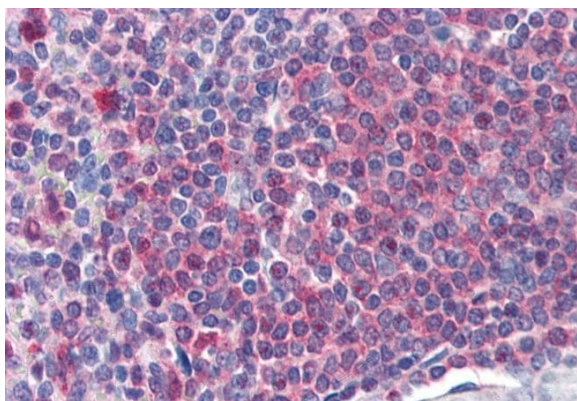
Properties

Form	Liquid
Purification	Purified from goat serum by antigen affinity chromatography.
Buffer	Tris saline (pH 7.3), 0.02% Sodium azide and 0.5% BSA.
Preservative	0.02% Sodium azide
Stabilizer	0.5% BSA
Concentration	0.5 mg/ml
Storage instruction	For continuous use, store undiluted antibody at 2-8°C for up to a week. For long-term storage, aliquot and store at -20°C or below. Storage in frost free freezers is not recommended. Avoid repeated freeze/thaw cycles. Suggest spin the vial prior to opening. The antibody solution should be gently mixed before use.

Bioinformation

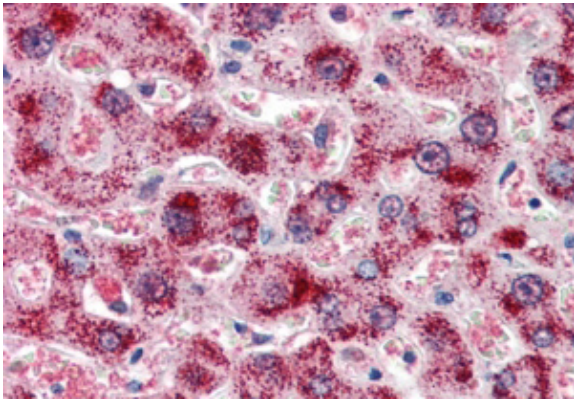
Database links	GeneID: 12359 Mouse GeneID: 847 Human Swiss-port # P04040 Human Swiss-port # P24270 Mouse
Background	<p>This gene encodes catalase, a key antioxidant enzyme in the bodies defense against oxidative stress. Catalase is a heme enzyme that is present in the peroxisome of nearly all aerobic cells. Catalase converts the reactive oxygen species hydrogen peroxide to water and oxygen and thereby mitigates the toxic effects of hydrogen peroxide. Oxidative stress is hypothesized to play a role in the development of many chronic or late-onset diseases such as diabetes, asthma, Alzheimer's disease, systemic lupus erythematosus, rheumatoid arthritis, and cancers. Polymorphisms in this gene have been associated with decreases in catalase activity but, to date, acatalasemia is the only disease known to be caused by this gene. [provided by RefSeq, Oct 2009]</p>
Highlight	<p>Related Antibody Duos and Panels: ARG30310 Endosome, Lysosome, Peroxisome Marker Antibody Panel (Catalase, Caveolin1, Clathrin heavy chain, LAMP1) Related products: Catalase antibodies: Catalase ELISA Kits: Catalase Duos / Panels: Anti-Goat IgG secondary antibodies:</p>
Research Area	Cancer antibody; Cell Biology and Cellular Response antibody; Controls and Markers antibody; Metabolism antibody; Signaling Transduction antibody; Peroxisome Marker antibody
Calculated Mw	60 kDa
PTM	The N-terminus is blocked.

Images



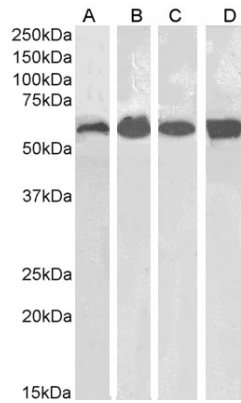
ARG63969 anti-Catalase antibody IHC-P image

Immunohistochemistry: Paraffin-embedded Human spleen tissue. Antigen Retrieval: Steam tissue section in Citrate buffer (pH 6.0). The tissue section was stained with ARG63969 anti-Catalase antibody at 2 µg/ml dilution followed by AP-staining.



ARG63969 anti-Catalase antibody IHC-P image

Immunohistochemistry: Paraffin embedded Human Liver. (Steamed antigen retrieval with citrate buffer pH 6) stained with ARG63969 anti-Catalase antibody at 2 µg/ml dilution followed by AP-staining.



ARG63969 anti-Catalase antibody WB image

Western blot: 35 µg of Human kidney (A), Human liver (B), Mouse kidney (C) and Mouse liver (D) lysates (in RIPA buffer) stained with ARG63969 anti-Catalase antibody at 0.1 µg/ml dilution and incubated at RT for 1 hour.