

ARG63992 anti-HTR1B / Serotonin Receptor 1B antibody

Package: 100 µg
Store at: -20°C

Summary

Product Description	Goat Polyclonal antibody recognizes HTR1B / Serotonin Receptor 1B
Tested Reactivity	Hu, Ms
Predict Reactivity	Cat, Rat, Cow, Dog, Pig
Tested Application	WB
Host	Goat
Clonality	Polyclonal
Isotype	IgG
Target Name	HTR1B / Serotonin Receptor 1B
Species	Human
Immunogen	C-SNEDFKQAFHK
Conjugation	Un-conjugated
Alternate Names	5-hydroxytryptamine receptor 1B; HTR1D2; S12; 5-HT-1D-beta; Serotonin 1D beta receptor; Serotonin receptor 1B; HTR1DB; 5-HT1B; 5-HT-1B; 5-HT1DB

Application Instructions

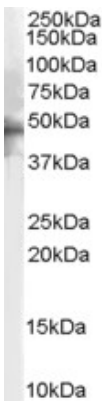
Application table	Application	Dilution
	WB	1 - 3 µg/ml
Application Note	WB: Recommend incubate at RT for 1h. * The dilutions indicate recommended starting dilutions and the optimal dilutions or concentrations should be determined by the scientist.	

Properties

Form	Liquid
Purification	Purified from goat serum by antigen affinity chromatography.
Buffer	Tris saline (pH 7.3), 0.02% Sodium azide and 0.5% BSA.
Preservative	0.02% Sodium azide
Stabilizer	0.5% BSA
Concentration	0.5 mg/ml
Storage instruction	For continuous use, store undiluted antibody at 2-8°C for up to a week. For long-term storage, aliquot and store at -20°C or below. Storage in frost free freezers is not recommended. Avoid repeated freeze/thaw cycles. Suggest spin the vial prior to opening. The antibody solution should be gently mixed before use.
Note	For laboratory research only, not for drug, diagnostic or other use.

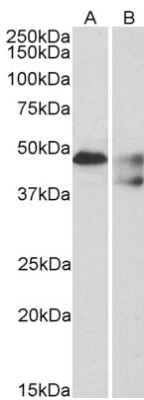
Database links	GeneID: 15551 Mouse GeneID: 3351 Human Swiss-port # P28222 Human Swiss-port # P28334 Mouse
Background	The neurotransmitter serotonin (5-hydroxytryptamine; 5-HT) exerts a wide variety of physiologic functions through a multiplicity of receptors and may be involved in human neuropsychiatric disorders such as anxiety, depression, or migraine. These receptors consist of several main groups subdivided into several distinct subtypes on the basis of their pharmacologic characteristics, coupling to intracellular second messengers, and distribution within the nervous system (Zifa and Fillion, 1992 [PubMed 1359584]). The serotonergic receptors belong to the multigene family of receptors coupled to guanine nucleotide-binding proteins.[supplied by OMIM, Oct 2009]
Research Area	Metabolism antibody; Neuroscience antibody
Calculated Mw	44 kDa
PTM	Phosphorylated. Desensitization of the receptor may be mediated by its phosphorylation. Palmitoylated.

Images



ARG63992 anti-HTR1B / Serotonin Receptor 1B antibody WB image

Western blot: Human Brain lysate (35 µg protein in RIPA buffer) stained with ARG63992 anti-HTR1B / Serotonin Receptor 1B antibody at 2 µg/ml dilution.



ARG63992 anti-HTR1B / Serotonin Receptor 1B antibody WB image

Western blot: 35 µg of Human cerebellum (A) and Mouse spinal cord (B) lysates (in RIPA buffer) stained with ARG63992 anti-HTR1B / Serotonin Receptor 1B antibody at 1 µg/ml dilution and incubated at RT for 1 hour.