

## ARG64058 anti-XRCC4 like factor / NHEJ1 antibody

Package: 100 µg  
Store at: -20°C

### Summary

Product Description	Goat Polyclonal antibody recognizes XRCC4 like factor / NHEJ1
Tested Reactivity	Hu
Predict Reactivity	Dog
Tested Application	IHC-P, WB
Host	Goat
Clonality	Polyclonal
Isotype	IgG
Target Name	XRCC4 like factor / NHEJ1
Species	Human
Immunogen	C-QRPQLSKVKRKKPR
Conjugation	Un-conjugated
Alternate Names	XLFI; Protein cernunnos; XRCC4-like factor; Non-homologous end-joining factor 1

### Application Instructions

Application table	Application	Dilution
	IHC-P	2 - 4 µg/ml
	WB	0.1 - 0.3 µg/ml
Application Note	IHC-P: Antigen Retrieval: Steam tissue section in Citrate buffer (pH 6.0). WB: Recommend incubate at RT for 1h. * The dilutions indicate recommended starting dilutions and the optimal dilutions or concentrations should be determined by the scientist.	

### Properties

Form	Liquid
Purification	Purified from goat serum by antigen affinity chromatography.
Buffer	Tris saline (pH 7.3), 0.02% Sodium azide and 0.5% BSA.
Preservative	0.02% Sodium azide
Stabilizer	0.5% BSA
Concentration	0.5 mg/ml
Storage instruction	For continuous use, store undiluted antibody at 2-8°C for up to a week. For long-term storage, aliquot and store at -20°C or below. Storage in frost free freezers is not recommended. Avoid repeated freeze/thaw cycles. Suggest spin the vial prior to opening. The antibody solution should be gently mixed before use.

Bioinformation

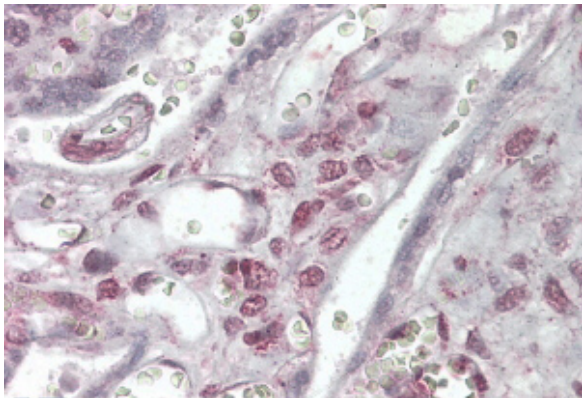
Database links	<a href="#">GeneID: 79840 Human</a> <a href="#">Swiss-port # Q9H9Q4 Human</a>
Background	Double-strand breaks in DNA result from genotoxic stresses and are among the most damaging of DNA lesions. This gene encodes a DNA repair factor essential for the nonhomologous end-joining pathway, which preferentially mediates repair of double-stranded breaks. Mutations in this gene cause different kinds of severe combined immunodeficiency disorders. [provided by RefSeq, Jul 2008]
Research Area	Gene Regulation antibody
Calculated Mw	33 kDa

Images



ARG64058 anti-XRCC4 like factor / NHEJ1 antibody WB image

Western blot: Human Thyroid lysate (35 µg protein in RIPA buffer) stained with ARG64058 anti-XRCC4 like factor / NHEJ1 antibody at 0.1 µg/ml dilution.



ARG64058 anti-XRCC4 like factor / NHEJ1 antibody IHC-P image

Immunohistochemistry: Paraffin embedded Human Placenta. (Steamed antigen retrieval with citrate buffer pH 6) stained with ARG64058 anti-XRCC4 like factor / NHEJ1 antibody at 3.8 µg/ml dilution followed by AP-staining.