

ARG64083 anti-Biglycan antibody

Package: 100 µg
Store at: -20°C

Summary

Product Description	Goat Polyclonal antibody recognizes Biglycan
Tested Reactivity	Hu, Ms
Predict Reactivity	Dog, Rat
Tested Application	ICC/IF
Host	Goat
Clonality	Polyclonal
Isotype	IgG
Target Name	Biglycan
Species	Human
Immunogen	C-DRLAIQFGNYKK (C-terminal)
Conjugation	Un-conjugated
Alternate Names	Biglycan; Bone/cartilage proteoglycan I; SLRR1A; PGI; DSPG1; PG-S1

Application Instructions

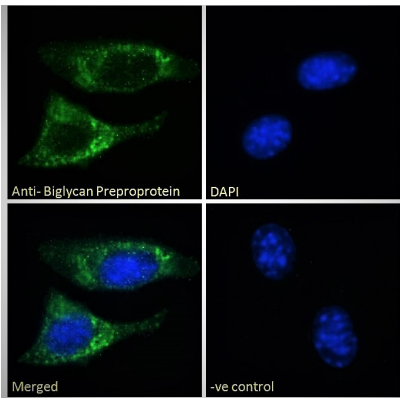
Application table	Application	Dilution
	ICC/IF	10 µg/ml
Application Note	* The dilutions indicate recommended starting dilutions and the optimal dilutions or concentrations should be determined by the scientist.	

Properties

Form	Liquid
Purification	Purified from goat serum by antigen affinity chromatography.
Buffer	Tris saline (pH 7.3), 0.02% Sodium azide and 0.5% BSA.
Preservative	0.02% Sodium azide
Stabilizer	0.5% BSA
Concentration	0.5 mg/ml
Storage instruction	For continuous use, store undiluted antibody at 2-8°C for up to a week. For long-term storage, aliquot and store at -20°C or below. Storage in frost free freezers is not recommended. Avoid repeated freeze/thaw cycles. Suggest spin the vial prior to opening. The antibody solution should be gently mixed before use.
Note	For laboratory research only, not for drug, diagnostic or other use.

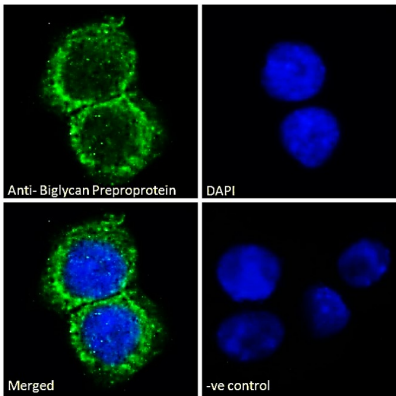
Database links	GeneID: 12111 Mouse GeneID: 633 Human Swiss-port # P21810 Human Swiss-port # P28653 Mouse
Background	The protein encoded by this gene is a small cellular or pericellular matrix proteoglycan that is closely related in structure to two other small proteoglycans, decorin and fibromodulin. The encoded protein and decorin are thought to be the result of a gene duplication. Decorin contains one attached glycosaminoglycan chain, while this protein probably contains two chains. For this reason, this protein is called biglycan. This protein plays a role in assembly of collagen fibrils and muscle regeneration. It interacts with several proteins involved in muscular dystrophy, including alpha-dystroglycan, alpha- and gamma-sarcoglycan and collagen VI, and it is critical for the assembly of the dystrophin-associated protein complex. [provided by RefSeq, Nov 2009]
Research Area	Developmental Biology antibody; Signaling Transduction antibody
Calculated Mw	42 kDa
PTM	The two attached glycosaminoglycan chains can be either chondroitin sulfate or dermatan sulfate.

Images



ARG64083 anti-Biglycan antibody ICC/IF image

Immunofluorescence: Paraformaldehyde fixed NIH/3T3 cells permeabilized with 0.15% Triton. Cells were stained with ARG64083 anti-Biglycan antibody (green) at 10 µg/ml dilution for 1 hour. DAPI (blue) for nuclear staining. Negative control: Unimmunized goat IgG (green) at 10 µg/ml dilution.



ARG64083 anti-Biglycan antibody ICC/IF image

Immunofluorescence: Paraformaldehyde fixed HepG2 cells permeabilized with 0.15% Triton. Cells were stained with ARG64083 anti-Biglycan antibody (green) at 10 µg/ml dilution for 1 hour. DAPI (blue) for nuclear staining. Negative control: Unimmunized goat IgG (green) at 10 µg/ml dilution.