

ARG64158 anti-ZDHHC8 antibody

Package: 100 µg
Store at: -20°C

Summary

Product Description	Goat Polyclonal antibody recognizes ZDHHC8
Tested Reactivity	Hu
Predict Reactivity	Ms, Rat, Dog, Pig
Tested Application	WB
Specificity	This antibody is expected to recognise isoform 2 (NP_037505.1) only.
Host	Goat
Clonality	Polyclonal
Isotype	IgG
Target Name	ZDHHC8
Species	Human
Immunogen	C-QRDHPQLKTPPSK
Conjugation	Un-conjugated
Alternate Names	Zinc finger protein 378; ZNF378; Zinc finger DHHC domain-containing protein 8; ZDHHCL1; Probable palmitoyltransferase ZDHHC8; EC 2.3.1.225; DHHC8; DHHC-8

Application Instructions

Application table	Application	Dilution
	WB	1 - 3 µg/ml
Application Note	WB: Recommend incubate at RT for 1h. * The dilutions indicate recommended starting dilutions and the optimal dilutions or concentrations should be determined by the scientist.	

Properties

Form	Liquid
Purification	Purified from goat serum by antigen affinity chromatography.
Buffer	Tris saline (pH 7.3), 0.02% Sodium azide and 0.5% BSA.
Preservative	0.02% Sodium azide
Stabilizer	0.5% BSA
Concentration	0.5 mg/ml
Storage instruction	For continuous use, store undiluted antibody at 2-8°C for up to a week. For long-term storage, aliquot and store at -20°C or below. Storage in frost free freezers is not recommended. Avoid repeated freeze/thaw cycles. Suggest spin the vial prior to opening. The antibody solution should be gently mixed before use.

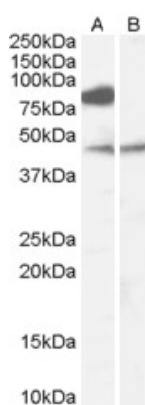
Note

For laboratory research only, not for drug, diagnostic or other use.

Bioinformation

Database links	GeneID: 29801 Human Swiss-port # Q9ULC8 Human
Background	This gene encodes a four transmembrane protein that is a member of the zinc finger DHHC domain-containing protein family. The encoded protein may function as a palmitoyltransferase. Defects in this gene may be associated with a susceptibility to schizophrenia. Alternate splicing of this gene results in multiple transcript variants. A pseudogene of this gene is found on chromosome 22.[provided by RefSeq, May 2010]
Research Area	Gene Regulation antibody; Neuroscience antibody; Signaling Transduction antibody
Calculated Mw	81 kDa

Images



ARG64158 anti-ZDHHC8 antibody WB image

Western Blot: Human Brain (Frontal Cortex) lysate (35 µg protein in RIPA buffer) with (B) and without (A) blocking with the immunising peptide. stained with ARG64158 anti-ZDHHC8 antibody at 0.1 µg/ml dilution.