

## ARG64250 anti-TREM2 antibody

Package: 100 µg  
Store at: -20°C

### Summary

Product Description	Goat Polyclonal antibody recognizes TREM2
Tested Reactivity	Hu
Tested Application	IHC-P
Host	Goat
Clonality	Polyclonal
Isotype	IgG
Target Name	TREM2
Species	Human
Immunogen	C-HGQKPGTHPPSELD
Conjugation	Un-conjugated
Alternate Names	Trem2a; Trem2b; TREM-2; Triggering receptor expressed on myeloid cells 2; Triggering receptor expressed on monocytes 2; Trem2c

### Application Instructions

Application table	Application	Dilution
	IHC-P	2 - 4 µg/ml
Application Note	IHC-P: Antigen Retrieval: Microwaved tissue section in Citrate buffer (pH 6.0). * The dilutions indicate recommended starting dilutions and the optimal dilutions or concentrations should be determined by the scientist.	

### Properties

Form	Liquid
Purification	Purified from goat serum by antigen affinity chromatography.
Buffer	Tris saline (pH 7.3), 0.02% Sodium azide and 0.5% BSA.
Preservative	0.02% Sodium azide
Stabilizer	0.5% BSA
Concentration	0.5 mg/ml
Storage instruction	For continuous use, store undiluted antibody at 2-8°C for up to a week. For long-term storage, aliquot and store at -20°C or below. Storage in frost free freezers is not recommended. Avoid repeated freeze/thaw cycles. Suggest spin the vial prior to opening. The antibody solution should be gently mixed before use.
Note	For laboratory research only, not for drug, diagnostic or other use.

## Bioinformation

### Database links

[GeneID: 54209 Human](#)

[Swiss-port # Q9NZC2 Human](#)

### Background

The protein encoded by this gene is a membrane protein that forms a receptor signaling complex with TYROBP. The encoded protein may be involved in chronic inflammation by triggering the production of constitutive inflammatory cytokines. Defects in this gene are a cause of polycystic lipomembranous osteodysplasia with sclerosing leukoencephalopathy (PLOSL). [provided by RefSeq, Jul 2008]

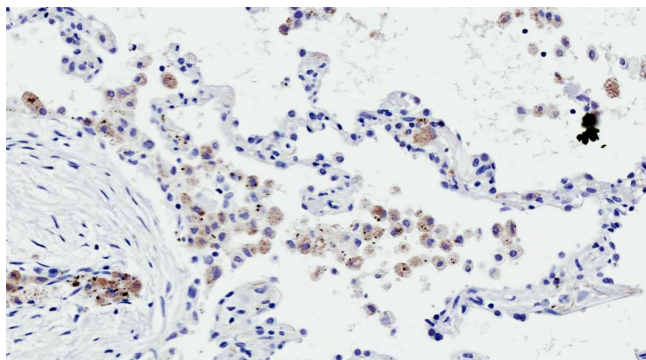
### Research Area

Immune System antibody

### Calculated Mw

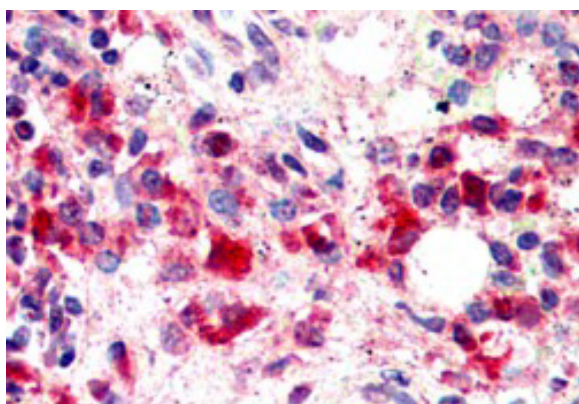
25 kDa

## Images



ARG64250 anti-TREM2 antibody IHC-P image

Immunohistochemistry: Paraffin-embedded Human lung tissue. Antigen Retrieval: Microwaved tissue section in Citrate buffer (pH 6.0). The tissue section was stained with ARG64250 anti-TREM2 antibody at 2 µg/ml dilution followed by HRP-staining.



ARG64250 anti-TREM2 antibody IHC-P image

Immunohistochemistry: paraffin embedded Human Spleen. (Steamed antigen retrieval with citrate buffer pH 6) stained with ARG64250 anti-TREM2 antibody at 2.5 µg/ml dilution followed by AP-staining.