

## ARG64289 anti-SAR1B / SARA2 antibody

Package: 100 µg  
Store at: -20°C

### Summary

Product Description	Goat Polyclonal antibody recognizes SAR1B / SARA2
Tested Reactivity	Ms, Rat
Predict Reactivity	Hu
Tested Application	WB
Specificity	Both reported variants (NP_001028675.1 and NP_057187.1) represent identical protein
Host	Goat
Clonality	Polyclonal
Isotype	IgG
Target Name	SAR1B / SARA2
Species	Human
Immunogen	C-DHERLLESKEELD
Conjugation	Un-conjugated
Alternate Names	ANDD; GTP-binding protein SAR1b; GTP-binding protein B; CMRD; SARA2; GTBPB

### Application Instructions

Application table	Application	Dilution
	WB	0.03 - 0.1 µg/ml
Application Note	WB: Recommend incubate at RT for 1h. * The dilutions indicate recommended starting dilutions and the optimal dilutions or concentrations should be determined by the scientist.	

### Properties

Form	Liquid
Purification	Purified from goat serum by antigen affinity chromatography.
Buffer	Tris saline (pH 7.3), 0.02% Sodium azide and 0.5% BSA.
Preservative	0.02% Sodium azide
Stabilizer	0.5% BSA
Concentration	0.5 mg/ml
Storage instruction	For continuous use, store undiluted antibody at 2-8°C for up to a week. For long-term storage, aliquot and store at -20°C or below. Storage in frost free freezers is not recommended. Avoid repeated freeze/thaw cycles. Suggest spin the vial prior to opening. The antibody solution should be gently mixed before use.

Bioinformation

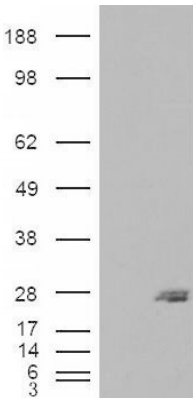
Database links	<a href="#">GeneID: 287276 Rat</a> <a href="#">GeneID: 66397 Mouse</a> <a href="#">Swiss-port # Q5HZY2 Rat</a> <a href="#">Swiss-port # Q9CQC9 Mouse</a>
Background	The protein encoded by this gene is a small GTPase that acts as a homodimer. The encoded protein is activated by the guanine nucleotide exchange factor PREB and is involved in protein transport from the endoplasmic reticulum to the Golgi. This protein is part of the COPII coat complex. Defects in this gene are a cause of chylomicron retention disease (CMRD), also known as Anderson disease (ANDD). Two transcript variants encoding the same protein have been found for this gene. [provided by RefSeq, Mar 2010]
Research Area	Signaling Transduction antibody
Calculated Mw	22 kDa

Images



ARG64289 anti-SAR1B / SARA2 antibody WB image

Western Blot: Mouse Liver lysate (35 µg protein in RIPA buffer) stained with ARG64289 anti-SAR1B / SARA2 antibody at 0.03 µg/ml dilution.



ARG64289 anti-SAR1B / SARA2 antibody WB image

Western Blot: 1). Mock transfection; 2) SAR1B (RC210593) expressing plasmid transfected HEK293 cell lysate stained with ARG64289 anti-SAR1B / SARA2 antibody