

ARG64331 anti-PLA2G1B antibody

Package: 100 µg
Store at: -20°C

Summary

Product Description	Goat Polyclonal antibody recognizes PLA2G1B
Tested Reactivity	Hu
Predict Reactivity	Dog
Tested Application	WB
Host	Goat
Clonality	Polyclonal
Isotype	IgG
Target Name	PLA2G1B
Species	Human
Immunogen	NKAHKNLDTKKYCQS
Conjugation	Un-conjugated
Alternate Names	Group IB phospholipase A2; PLA2A; Phospholipase A2; PLA2; Phosphatidylcholine 2-acylhydrolase 1B; PPLA2; EC 3.1.1.4

Application Instructions

Application table	Application	Dilution
	WB	0.01 µg/ml

Application Note
WB: Recommend incubate at RT for 1h.
* The dilutions indicate recommended starting dilutions and the optimal dilutions or concentrations should be determined by the scientist.

Properties

Form	Liquid
Purification	Purified from goat serum by antigen affinity chromatography.
Buffer	Tris saline (pH 7.3), 0.02% Sodium azide and 0.5% BSA.
Preservative	0.02% Sodium azide
Stabilizer	0.5% BSA
Concentration	0.5 mg/ml
Storage instruction	For continuous use, store undiluted antibody at 2-8°C for up to a week. For long-term storage, aliquot and store at -20°C or below. Storage in frost free freezers is not recommended. Avoid repeated freeze/thaw cycles. Suggest spin the vial prior to opening. The antibody solution should be gently mixed before use.
Note	For laboratory research only, not for drug, diagnostic or other use.

Bioinformation

Database links

[GeneID: 5319 Human](#)

[Swiss-port # P04054 Human](#)

Background

Phospholipase A2 (EC 3.1.1.4) catalyzes the release of fatty acids from glycerol-3-phosphocholines. The best known varieties are the digestive enzymes secreted as zymogens by the pancreas of mammals. Sequences of pancreatic PLA2 enzymes from a variety of mammals have been reported. One striking feature of these enzymes is their close homology to venom phospholipases of snakes. Other forms of PLA2 have been isolated from brain, liver, lung, spleen, intestine, macrophages, leukocytes, erythrocytes, inflammatory exudates, chondrocytes, and platelets (Seilhamer et al., 1986 [PubMed 3028739]) .[supplied by OMIM, Mar 2008]

Research Area

Metabolism antibody; Signaling Transduction antibody

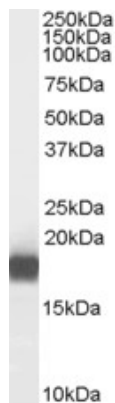
Calculated Mw

16 kDa

PTM

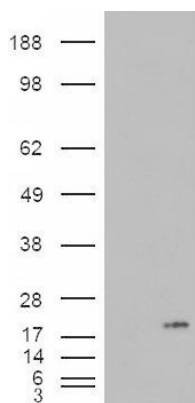
Activated by trypsin cleavage in the duodenum. Can also be activated by thrombin or autocatalytically.

Images



ARG64331 anti-PLA2G1B antibody WB image

Western Blot: Human Pancreas lysate (35 µg protein in RIPA buffer) stained with ARG64331 anti-PLA2G1B antibody at 0.01 µg/ml dilution.



ARG64331 anti-PLA2G1B antibody WB image

Western Blot: 1). Mock transfection; 2) PLA2G1B (RC216089) expressing plasmid transfected HEK293 cell lysate stained with ARG64331 anti-PLA2G1B antibody