

ARG64387 anti-LASP1 antibody

Package: 100 µg
Store at: -20°C

Summary

Product Description	Goat Polyclonal antibody recognizes LASP1
Tested Reactivity	Hu
Predict Reactivity	Dog
Tested Application	IHC-P, WB
Host	Goat
Clonality	Polyclonal
Isotype	IgG
Target Name	LASP1
Species	Human
Immunogen	C-PERRDSQDGSSYR
Conjugation	Un-conjugated
Alternate Names	MLN 50; LIM and SH3 domain protein 1; LASP-1; Lasp-1; Metastatic lymph node gene 50 protein; MLN50

Application Instructions

Application table	Application	Dilution
	IHC-P	2.5 µg/ml
	WB	0.03 - 0.1 µg/ml
Application Note	WB: Recommend incubate at RT for 1h. IHC-P: Antigen Retrieval: Steam tissue section in Citrate buffer (pH 6.0). * The dilutions indicate recommended starting dilutions and the optimal dilutions or concentrations should be determined by the scientist.	

Properties

Form	Liquid
Purification	Purified from goat serum by antigen affinity chromatography.
Buffer	Tris saline (pH 7.3), 0.02% Sodium azide and 0.5% BSA.
Preservative	0.02% Sodium azide
Stabilizer	0.5% BSA
Concentration	0.5 mg/ml
Storage instruction	For continuous use, store undiluted antibody at 2-8°C for up to a week. For long-term storage, aliquot and store at -20°C or below. Storage in frost free freezers is not recommended. Avoid repeated freeze/thaw cycles. Suggest spin the vial prior to opening. The antibody solution should be gently mixed

before use.

Note

For laboratory research only, not for drug, diagnostic or other use.

Bioinformation

Database links

[GeneID: 3927 Human](#)

[Swiss-port # Q14847 Human](#)

Background

This gene encodes a member of a LIM protein subfamily characterized by a LIM motif and a domain of Src homology region 3. The encoded protein functions as an actin-binding protein and possibly in cytoskeletal organization. [provided by RefSeq, Jan 2009]

Research Area

Signaling Transduction antibody

Calculated Mw

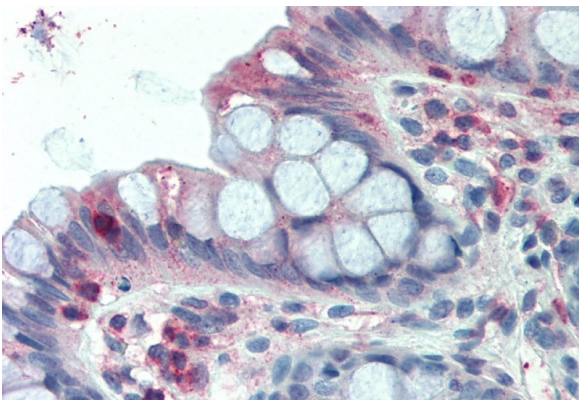
30 kDa

Images



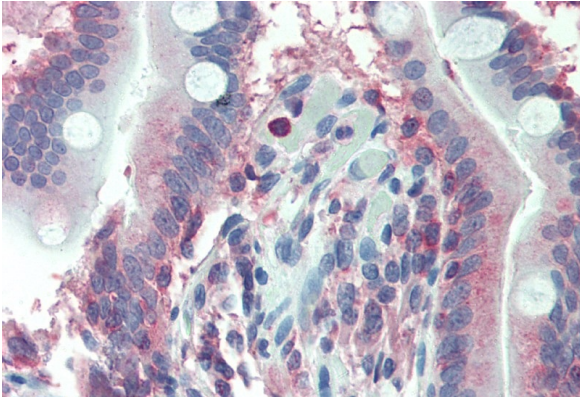
ARG64387 anti-LASP1 antibody WB image

Western Blot: Human Kidney lysate (35 µg protein in RIPA buffer) stained with ARG64387 anti-LASP1 antibody at 0.1 µg/ml dilution.



ARG64387 anti-LASP1 antibody IHC-P image

Immunohistochemistry: Paraffin-embedded Human colon tissue. Antigen Retrieval: Steam tissue section in Citrate buffer (pH 6.0). The tissue section was stained with ARG64387 anti-LASP1 antibody at 2.5 µg/ml dilution followed by AP-staining.



ARG64387 anti-LASP1 antibody IHC-P image

Immunohistochemistry: Paraffin-embedded Human small intestine tissue. Antigen Retrieval: Steam tissue section in Citrate buffer (pH 6.0). The tissue section was stained with ARG64387 anti-LASP1 antibody at 2.5 µg/ml dilution followed by AP-staining.