

## ARG64404 anti-CADM4 antibody

Package: 100 µg  
Store at: -20°C

### Summary

Product Description	Goat Polyclonal antibody recognizes CADM4
Tested Reactivity	Hu
Predict Reactivity	Ms, Rat, Dog
Tested Application	IHC-P, WB
Host	Goat
Clonality	Polyclonal
Isotype	IgG
Target Name	CADM4
Species	Human
Immunogen	C-REAFLNGSDGHRKE
Conjugation	Un-conjugated
Alternate Names	IGSF4C; NECL4; Cell adhesion molecule 4; IgSF4C; Necl-4; Nectin-like protein 4; TSLC1-like protein 2; Immunoglobulin superfamily member 4C; TSL2; NECL-4; synCAM4

### Application Instructions

Application table	Application	Dilution
	IHC-P	2.5 µg/ml
	WB	0.03 - 0.1 µg/ml
Application Note	WB: Recommend incubate at RT for 1h. IHC-P: Antigen Retrieval: Steam tissue section in Citrate buffer (pH 6.0). * The dilutions indicate recommended starting dilutions and the optimal dilutions or concentrations should be determined by the scientist.	

### Properties

Form	Liquid
Purification	Purified from goat serum by antigen affinity chromatography.
Buffer	Tris saline (pH 7.3), 0.02% Sodium azide and 0.5% BSA.
Preservative	0.02% Sodium azide
Stabilizer	0.5% BSA
Concentration	0.5 mg/ml
Storage instruction	For continuous use, store undiluted antibody at 2-8°C for up to a week. For long-term storage, aliquot and store at -20°C or below. Storage in frost free freezers is not recommended. Avoid repeated freeze/thaw cycles. Suggest spin the vial prior to opening. The antibody solution should be gently mixed

before use.

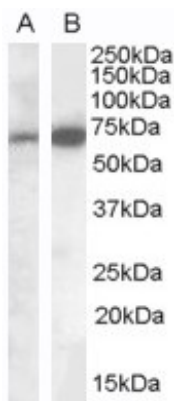
#### Note

For laboratory research only, not for drug, diagnostic or other use.

## Bioinformation

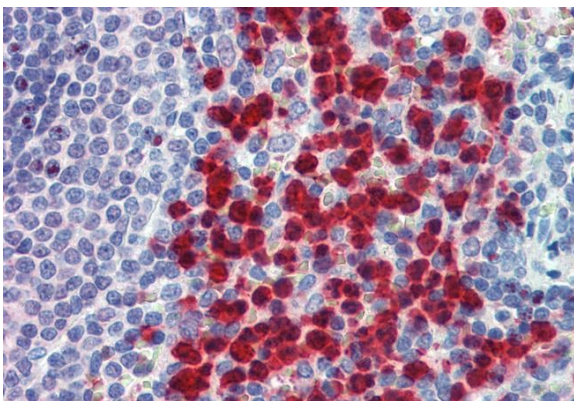
Database links	<a href="#">GeneID: 199731 Human</a> <a href="#">Swiss-port # Q8NFZ8 Human</a>
Gene Symbol	CADM4
Gene Full Name	cell adhesion molecule 4
Function	Involved in the cell-cell adhesion. Has calcium- and magnesium-independent cell-cell adhesion activity. May have tumor-suppressor activity. [UniProt]
Research Area	Cancer antibody
Calculated Mw	43 kDa
PTM	N-glycosylated.

## Images



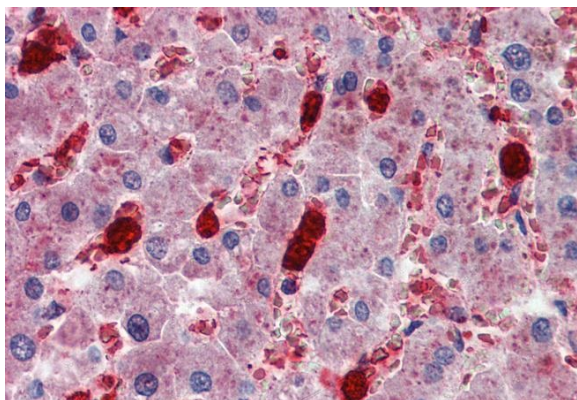
ARG64404 anti-CADM4 antibody WB image

Western Blot: Human Brain (Cerebellum) lysate (35µg protein in RIPA buffer). A) ARG64337 anti-CADM4 antibody (0.1µg/ml) and B) ARG64404 anti-CADM4 antibody (0.05µg/ml).



ARG64404 anti-CADM4 antibody IHC-P image

Immunohistochemistry: Paraffin-embedded Human spleen tissue. Antigen Retrieval: Steam tissue section in Citrate buffer (pH 6.0). The tissue section was stained with ARG64404 anti-CADM4 antibody at 2.5 µg/ml dilution followed by AP-staining.



ARG64404 anti-CADM4 antibody IHC-P image

Immunohistochemistry: Paraffin-embedded Human liver tissue.  
Antigen Retrieval: Steam tissue section in Citrate buffer (pH 6.0). The tissue section was stained with ARG64404 anti-CADM4 antibody at 2.5 µg/ml dilution followed by AP-staining.