

## ARG64414 anti-Renalase antibody

Package: 100 µg  
Store at: -20°C

### Summary

Product Description	Goat Polyclonal antibody recognizes Renalase
Tested Reactivity	Ms, Rat
Predict Reactivity	Hu
Tested Application	WB
Specificity	This antibody is expected to recognize both reported isoforms (NP_001026879.1 and NP_060833.1).
Host	Goat
Clonality	Polyclonal
Isotype	IgG
Target Name	Renalase
Species	Human
Immunogen	C-QINLRDDKWEVSKQ
Conjugation	Un-conjugated
Alternate Names	alpha-NAD; MAO-C; Monoamine oxidase-C; EC 1.6.3.5; RENALASE; P; C10orf59; Renalase

### Application Instructions

Application table	Application	Dilution
	WB	0.5 - 1.5 µg/ml
Application Note	WB: Recommend incubate at RT for 1h. * The dilutions indicate recommended starting dilutions and the optimal dilutions or concentrations should be determined by the scientist.	

### Properties

Form	Liquid
Purification	Purified from goat serum by antigen affinity chromatography.
Buffer	Tris saline (pH 7.3), 0.02% Sodium azide and 0.5% BSA.
Preservative	0.02% Sodium azide
Stabilizer	0.5% BSA
Concentration	0.5 mg/ml
Storage instruction	For continuous use, store undiluted antibody at 2-8°C for up to a week. For long-term storage, aliquot and store at -20°C or below. Storage in frost free freezers is not recommended. Avoid repeated freeze/thaw cycles. Suggest spin the vial prior to opening. The antibody solution should be gently mixed before use.

**Note**

For laboratory research only, not for drug, diagnostic or other use.

## Bioinformation

---

**Database links**

[GeneID: 361751 Rat](#)

[GeneID: 67795 Mouse](#)

[Swiss-port # A7RDN6 Mouse](#)

[Swiss-port # Q5U2W9 Rat](#)

**Background**

Renalase is a flavin adenine dinucleotide-dependent amine oxidase that is secreted into the blood from the kidney (Xu et al., 2005 [PubMed 15841207]).[supplied by OMIM, Mar 2008]

**Research Area**

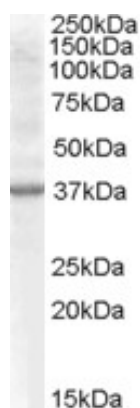
Cell Biology and Cellular Response antibody; Neuroscience antibody

**Calculated Mw**

38 kDa

## Images

---

**ARG64414 anti-Renalase antibody WB image**

Western Blot: Rat Kidney lysate (35 µg protein in RIPA buffer) stained with ARG64414 anti-Renalase (aa 134 to 147) antibody at 0.5 µg/ml dilution.