

ARG64462 anti-ASRGL1 / ALP antibody

Package: 100 µg
Store at: -20°C

Summary

Product Description	Goat Polyclonal antibody recognizes ASRGL1 / ALP
Tested Reactivity	Hu
Tested Application	WB
Specificity	Both reported variants represent identical protein (NP_001077395.1 and NP_079356.3).
Host	Goat
Clonality	Polyclonal
Isotype	IgG
Target Name	ASRGL1 / ALP
Species	Human
Immunogen	EKHEKGAQKTDCC
Conjugation	Un-conjugated
Alternate Names	ASRGL1; Asparaginase And Isoaspartyl Peptidase 1; ALP; ALP1; Isoaspartyl Peptidase/L-Asparaginase; Asparaginase-Like 1 Protein; L-Asparagine Amidohydrolase; Asparaginase-Like Protein 1; Beta-Aspartyl-Peptidase; Isoaspartyl Dipeptidase; Asparaginase Like 1; EC 3.5.1.1; FLJ22316; CRASH; Testis Secretory Sperm-Binding Protein Li 242mP; L-Asparaginase; EC 3.4.19.5

Application Instructions

Application table	Application	Dilution
	WB	1 - 3 µg/ml
Application Note	WB: Recommend incubate at RT for 1h. * The dilutions indicate recommended starting dilutions and the optimal dilutions or concentrations should be determined by the scientist.	

Properties

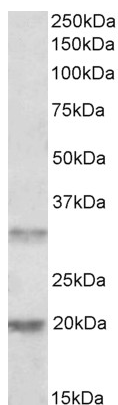
Form	Liquid
Purification	Purified from goat serum by antigen affinity chromatography.
Buffer	Tris saline (pH 7.3), 0.02% Sodium azide and 0.5% BSA.
Preservative	0.02% Sodium azide
Stabilizer	0.5% BSA
Concentration	0.5 mg/ml
Storage instruction	For continuous use, store undiluted antibody at 2-8°C for up to a week. For long-term storage, aliquot and store at -20°C or below. Storage in frost free freezers is not recommended. Avoid repeated freeze/thaw cycles. Suggest spin the vial prior to opening. The antibody solution should be gently mixed before use.

Note For laboratory research only, not for drug, diagnostic or other use.

Bioinformation

Database links	GeneID: 80150 Human Swiss-port # Q7L266 Human
Gene Symbol	ASRGL1
Gene Full Name	Asparaginase And Isoaspartyl Peptidase 1
Background	Enables asparaginase activity and beta-aspartyl-peptidase activity. Involved in asparagine catabolic process via L-aspartate. Located in cytoplasm. [provided by Alliance of Genome Resources, Apr 2022]
Function	Has both L-asparaginase and beta-aspartyl peptidase activity. May be involved in the production of L-aspartate, which can act as an excitatory neurotransmitter in some brain regions. Is highly active with L-Asp beta-methyl ester. Besides, has catalytic activity toward beta-aspartyl dipeptides and their methyl esters, including beta-L-Asp-L-Phe, beta-L-Asp-L-Phe methyl ester (aspartame), beta-L-Asp-L-Ala, beta-L-Asp-L-Leu and beta-L-Asp-L-Lys. Does not have aspartylglucosaminidase activity and is inactive toward GlcNAc-L-Asn. Likewise, has no activity toward glutamine. [UniProt]
Research Area	Metabolism antibody; Neuroscience antibody; Signaling Transduction antibody
Calculated Mw	32 kDa
PTM	Acetylation, Autocatalytic cleavage. [UniProt]
Cellular Localization	Cytoplasm. [UniProt]

Images



ARG64462 anti-ASRGL1 / ALP antibody WB image

Western Blot: Human Tonsil lysate (35 µg protein in RIPA buffer) stained with ARG64462 anti-ASRGL1 / ALP antibody at 0.5 µg/ml dilution.