

ARG64474 anti-Pyruvate Carboxylase antibody

Package: 100 µg
Store at: -20°C

Summary

Product Description	Goat Polyclonal antibody recognizes Pyruvate Carboxylase
Tested Reactivity	Hu
Predict Reactivity	Ms, Rat, Cow, Dog, Pig
Tested Application	FACS, IHC-P
Specificity	All reported variants (NP_000911.2; NP_001035806.1; NP_071504.2) represent identical protein.
Host	Goat
Clonality	Polyclonal
Isotype	IgG
Target Name	Pyruvate Carboxylase
Species	Human
Immunogen	C-KFKEVKKAYVEANQ
Conjugation	Un-conjugated
Alternate Names	PCB; Pyruvic carboxylase; EC 6.4.1.1; Pyruvate carboxylase, mitochondrial

Application Instructions

Application table	Application	Dilution
	FACS	10 µg/ml
	IHC-P	5 µg/ml
Application Note	IHC-P: Antigen Retrieval: Steam tissue section in Citrate buffer (pH 6.0). * The dilutions indicate recommended starting dilutions and the optimal dilutions or concentrations should be determined by the scientist.	

Properties

Form	Liquid
Purification	Purified from goat serum by antigen affinity chromatography.
Buffer	Tris saline (pH 7.3), 0.02% Sodium azide and 0.5% BSA.
Preservative	0.02% Sodium azide
Stabilizer	0.5% BSA
Concentration	0.5 mg/ml
Storage instruction	For continuous use, store undiluted antibody at 2-8°C for up to a week. For long-term storage, aliquot and store at -20°C or below. Storage in frost free freezers is not recommended. Avoid repeated freeze/thaw cycles. Suggest spin the vial prior to opening. The antibody solution should be gently mixed before use.

Bioinformation

Database links

[GeneID: 5091 Human](#)

[Swiss-port # P11498 Human](#)

Background

This gene encodes pyruvate carboxylase, which requires biotin and ATP to catalyse the carboxylation of pyruvate to oxaloacetate. The active enzyme is a homotetramer arranged in a tetrahedron which is located exclusively in the mitochondrial matrix. Pyruvate carboxylase is involved in gluconeogenesis, lipogenesis, insulin secretion and synthesis of the neurotransmitter glutamate. Mutations in this gene have been associated with pyruvate carboxylase deficiency. Alternatively spliced transcript variants with different 5' UTRs, but encoding the same protein, have been found for this gene. [provided by RefSeq, Jul 2008]

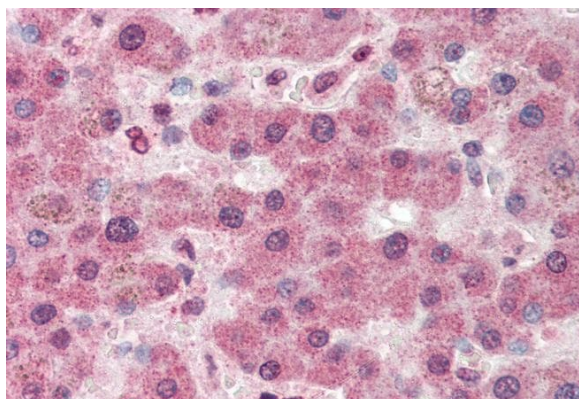
Research Area

Cancer antibody; Metabolism antibody; Signaling Transduction antibody

Calculated Mw

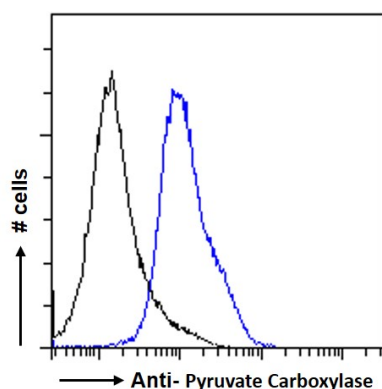
130 kDa

Images



ARG64474 anti-Pyruvate Carboxylase antibody IHC-P image

Immunohistochemistry: Paraffin-embedded Human liver tissue. Antigen Retrieval: Steam tissue section in Citrate buffer (pH 6.0). The tissue section was stained with ARG64474 anti-Pyruvate Carboxylase antibody at 5 µg/ml dilution followed by AP-staining.



ARG64474 anti-Pyruvate Carboxylase antibody FACS image

Flow Cytometry: Paraformaldehyde-fixed HeLa cells permeabilized with 0.5% Triton. Cells were stained with ARG64474 anti-Pyruvate Carboxylase antibody (blue line) at 10 µg/ml dilution for 1 hour, followed by incubation with Alexa Fluor® 488 labelled secondary antibody. IgG control: Unimmunized goat IgG (black line), followed by incubation with Alexa Fluor® 488 labelled secondary antibody.