

ARG64485 anti-LYPLAL1 antibody

Package: 100 µg
Store at: -20°C

Summary

Product Description	Goat Polyclonal antibody recognizes LYPLAL1
Tested Reactivity	Hu
Tested Application	WB
Host	Goat
Clonality	Polyclonal
Isotype	IgG
Target Name	LYPLAL1
Species	Human
Immunogen	DRFKITNDCPEHLE
Conjugation	Un-conjugated
Alternate Names	Q96AV0; Lysophospholipase-like protein 1; EC 3.1.2.-

Application Instructions

Application table	Application	Dilution
	WB	0.3 - 1 µg/ml
Application Note	WB: Recommend incubate at RT for 1h. * The dilutions indicate recommended starting dilutions and the optimal dilutions or concentrations should be determined by the scientist.	

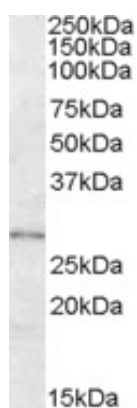
Properties

Form	Liquid
Purification	Purified from goat serum by antigen affinity chromatography.
Buffer	Tris saline (pH 7.3), 0.02% Sodium azide and 0.5% BSA.
Preservative	0.02% Sodium azide
Stabilizer	0.5% BSA
Concentration	0.5 mg/ml
Storage instruction	For continuous use, store undiluted antibody at 2-8°C for up to a week. For long-term storage, aliquot and store at -20°C or below. Storage in frost free freezers is not recommended. Avoid repeated freeze/thaw cycles. Suggest spin the vial prior to opening. The antibody solution should be gently mixed before use.
Note	For laboratory research only, not for drug, diagnostic or other use.

Bioinformation

Database links	GeneID: 127018 Human Swiss-port # Q5VWZ2 Human
Gene Symbol	LYPLAL1
Gene Full Name	lysophospholipase-like 1
Function	Has depalmitoylating activity toward KCNMA1. Does not exhibit phospholipase nor triacylglycerol lipase activity, able to hydrolyze only short chain substrates due to its shallow active site. [UniProt]
Research Area	Metabolism antibody; Signaling Transduction antibody
Calculated Mw	26 kDa

Images



ARG64485 anti-LYPLAL1 antibody WB image

Western Blot: Human Adipose lysate (35 µg protein in RIPA buffer) stained with ARG64485 anti-LYPLAL1 antibody at 0.3 µg/ml dilution.