

ARG64500 anti-Estrogen related Receptor gamma antibody

Package: 100 µg
Store at: -20°C

Summary

Product Description	Goat Polyclonal antibody recognizes Estrogen related Receptor gamma
Tested Reactivity	Hu
Predict Reactivity	Ms, Dog
Tested Application	WB
Specificity	This antibody is expected to recognise the reported isoform NP_001429.2.
Host	Goat
Clonality	Polyclonal
Isotype	IgG
Target Name	Estrogen related Receptor gamma
Species	Human
Immunogen	CRMSNKDRHIDS
Conjugation	Un-conjugated
Alternate Names	Nuclear receptor subfamily 3 group B member 3; NR3B3; Estrogen receptor-related protein 3; ERR gamma-2; ERR3; ERRgamma; Estrogen-related receptor gamma

Application Instructions

Application table	Application	Dilution
	WB	0.2 - 0.6 µg/ml
Application Note	WB: Recommend incubate at RT for 1h. * The dilutions indicate recommended starting dilutions and the optimal dilutions or concentrations should be determined by the scientist.	

Properties

Form	Liquid
Purification	Purified from goat serum by antigen affinity chromatography.
Buffer	Tris saline (pH 7.3), 0.02% Sodium azide and 0.5% BSA.
Preservative	0.02% Sodium azide
Stabilizer	0.5% BSA
Concentration	0.5 mg/ml
Storage instruction	For continuous use, store undiluted antibody at 2-8°C for up to a week. For long-term storage, aliquot and store at -20°C or below. Storage in frost free freezers is not recommended. Avoid repeated freeze/thaw cycles. Suggest spin the vial prior to opening. The antibody solution should be gently mixed before use.

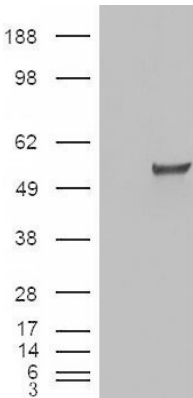
Note	For laboratory research only, not for drug, diagnostic or other use.
<div>Bioinformation</div>	
Database links	GeneID: 2104 Human Swiss-port # P62508 Human
Background	<p>This gene encodes a member of the estrogen receptor-related receptor (ESRR) family, which belongs to the nuclear hormone receptor superfamily. All members of the ESRR family share an almost identical DNA binding domain, which is composed of two C4-type zinc finger motifs. The ESRR members are orphan nuclear receptors; they bind to the estrogen response element and steroidogenic factor 1 response element, and activate genes controlled by both response elements in the absence of any ligands. The ESRR family is closely related to the estrogen receptor (ER) family. They share target genes, co-regulators and promoters, and by targeting the same set of genes, the ESRRs seem to interfere with the ER-mediated estrogen response in various ways. It has been reported that the family member encoded by this gene functions as a transcriptional activator of DNA cytosine-5-methyltransferases 1 (Dnmt1) expression by direct binding to its response elements in the DNMT1 promoters, modulates cell proliferation and estrogen signaling in breast cancer, and negatively regulates bone morphogenetic protein 2-induced osteoblast differentiation and bone formation. Multiple alternatively spliced transcript variants have been identified, which mainly differ at the 5' end and some of which encode protein isoforms differing in the N-terminal region. [provided by RefSeq, Aug 2011]</p>
Research Area	Cancer antibody; Gene Regulation antibody; Signaling Transduction antibody
Calculated Mw	51 kDa
PTM	<p>Acetylated by PCAF/KAT2 (in vitro).</p> <p>Sumoylation on Lys-40 is enhanced by phosphorylation at Ser-45 and represses transcriptional activity. Phosphorylation on Ser-45 enhances sumoylation on Lys-40 thus repressing transcriptional activity.</p>

Images



ARG64500 anti-Estrogen related Receptor gamma antibody WB image

Western blot: 35 µg of Human Breast lysate stained with ARG64500 anti-Estrogen related Receptor gamma antibody at 0.2 µg/ml dilution.



ARG64500 anti-Estrogen related Receptor gamma antibody WB image

Western blot: 1) Mock transfection and 2) ESRRG expressing plasmid transfected HEK293 cell lysate stained with ARG64500 anti-Estrogen related Receptor gamma antibody.