

ARG64518
anti-GPR142 antibodyPackage: 100 µg
Store at: -20°C

Summary

Product Description	Goat Polyclonal antibody recognizes GPR142
Tested Reactivity	Hu
Tested Application	WB
Host	Goat
Clonality	Polyclonal
Isotype	IgG
Target Name	GPR142
Species	Human
Immunogen	C-DMWRDSDSPRTLD
Conjugation	Un-conjugated
Alternate Names	Probable G-protein coupled receptor 142; PGR2; G-protein coupled receptor PGR2

Application Instructions

Application table	Application	Dilution
	WB	1 - 3 µg/ml
Application Note	WB: Recommend incubate at RT for 1h. * The dilutions indicate recommended starting dilutions and the optimal dilutions or concentrations should be determined by the scientist.	

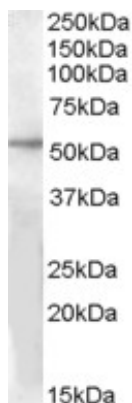
Properties

Form	Liquid
Purification	Purified from goat serum by antigen affinity chromatography.
Buffer	Tris saline (pH 7.3), 0.02% Sodium azide and 0.5% BSA.
Preservative	0.02% Sodium azide
Stabilizer	0.5% BSA
Concentration	0.5 mg/ml
Storage instruction	For continuous use, store undiluted antibody at 2-8°C for up to a week. For long-term storage, aliquot and store at -20°C or below. Storage in frost free freezers is not recommended. Avoid repeated freeze/thaw cycles. Suggest spin the vial prior to opening. The antibody solution should be gently mixed before use.
Note	For laboratory research only, not for drug, diagnostic or other use.

Bioinformation

Database links	GeneID: 350383 Human Swiss-port # Q7Z601 Human
Background	GPR142 is a member of the rhodopsin family of G protein-coupled receptors (GPRs) (Fredriksson et al., 2003 [PubMed 14623098]).[supplied by OMIM, Mar 2008]
Research Area	Neuroscience antibody; Signaling Transduction antibody
Calculated Mw	51 kDa

Images



ARG64518 anti-GPR142 antibody WB image

Western Blot: Human Liver lysate (35 µg protein in RIPA buffer) with (B) and without (A) blocking with the immunising peptide. stained with ARG64518 anti-GPR142 antibody at 1 µg/ml dilution.