

ARG64541 anti-GPR125 antibody

Package: 100 µg
Store at: -20°C

Summary

| | |
|---------------------|--|
| Product Description | Goat Polyclonal antibody recognizes GPR125 |
| Tested Reactivity | Hu |
| Predict Reactivity | Ms |
| Tested Application | IHC-P, WB |
| Host | Goat |
| Clonality | Polyclonal |
| Isotype | IgG |
| Target Name | GPR125 |
| Species | Human |
| Immunogen | CTNKSASSFKNS |
| Conjugation | Un-conjugated |
| Alternate Names | PGR21; Adhesion G protein-coupled receptor A3; GPR125; TEM5L; G-protein coupled receptor 125 |

Application Instructions

| Application table | Application | Dilution |
|-------------------|--|-----------------|
| | IHC-P | 3 - 5 µg/ml |
| | WB | 0.5 - 1.5 µg/ml |
| Application Note | WB: Recommend incubate at RT for 1h. IHC-P: Antigen Retrieval: Steam tissue section in Citrate buffer (pH 6.0). * The dilutions indicate recommended starting dilutions and the optimal dilutions or concentrations should be determined by the scientist. | |

Properties

| | |
|---------------------|--|
| Form | Liquid |
| Purification | Purified from goat serum by antigen affinity chromatography. |
| Buffer | Tris saline (pH 7.3), 0.02% Sodium azide and 0.5% BSA. |
| Preservative | 0.02% Sodium azide |
| Stabilizer | 0.5% BSA |
| Concentration | 0.5 mg/ml |
| Storage instruction | For continuous use, store undiluted antibody at 2-8°C for up to a week. For long-term storage, aliquot and store at -20°C or below. Storage in frost free freezers is not recommended. Avoid repeated freeze/thaw cycles. Suggest spin the vial prior to opening. The antibody solution should be gently mixed before use. |

Bioinformation

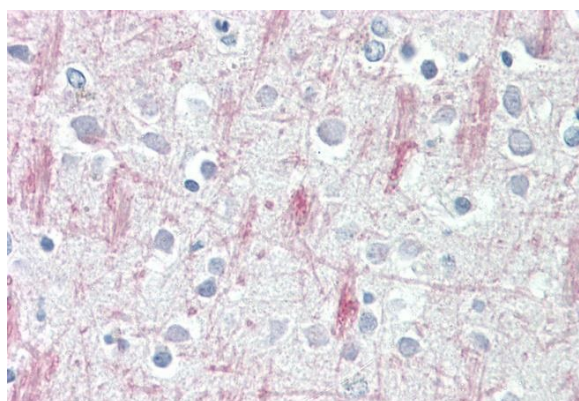
| | |
|----------------|--|
| Database links | GeneID: 166647 Human Swiss-port # Q8IWK6 Human |
| Background | This gene encodes a member of the G protein-coupled receptor superfamily. This membrane protein may play a role in tumor angiogenesis through its interaction with the human homolog of the Drosophila disc large tumor suppressor gene. This gene is mapped to a candidate region of chromosome 4 which may be associated with bipolar disorder and schizophrenia. [provided by RefSeq, Oct 2012] |
| Research Area | Signaling Transduction antibody |
| Calculated Mw | 146 kDa |

Images



ARG64541 anti-GPR125 antibody WB image

Western Blot: Human Ovary lysate (35 µg protein in RIPA buffer) stained with ARG64541 anti-GPR125 antibody at 0.5 µg/ml dilution.



ARG64541 anti-GPR125 antibody IHC-P image

Immunohistochemistry: Paraffin-embedded Human cortex tissue. Antigen Retrieval: Steam tissue section in Citrate buffer (pH 6.0). The tissue section was stained with ARG64541 anti-GPR125 antibody at 3.75 µg/ml dilution followed by AP-staining.