

## ARG64582 anti-SEL1L antibody

Package: 100 µg  
Store at: -20°C

### Summary

Product Description	Goat Polyclonal antibody recognizes SEL1L
Tested Reactivity	Hu
Predict Reactivity	Cow, Dog
Tested Application	WB
Host	Goat
Clonality	Polyclonal
Isotype	IgG
Target Name	SEL1L
Species	Human
Immunogen	C-TAYNSYKGDYDYN
Conjugation	Un-conjugated
Alternate Names	PRO1063; SEL1L1; Sel-1L; Protein sel-1 homolog 1; SEL1-LIKE; Suppressor of lin-12-like protein 1

### Application Instructions

Application table	Application	Dilution
	WB	1 - 3 µg/ml
Application Note	WB: Recommend incubate at RT for 1h. * The dilutions indicate recommended starting dilutions and the optimal dilutions or concentrations should be determined by the scientist.	

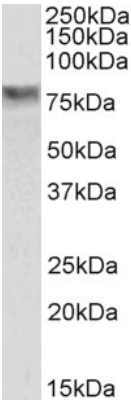
### Properties

Form	Liquid
Purification	Purified from goat serum by antigen affinity chromatography.
Buffer	Tris saline (pH 7.3), 0.02% Sodium azide and 0.5% BSA.
Preservative	0.02% Sodium azide
Stabilizer	0.5% BSA
Concentration	0.5 mg/ml
Storage instruction	For continuous use, store undiluted antibody at 2-8°C for up to a week. For long-term storage, aliquot and store at -20°C or below. Storage in frost free freezers is not recommended. Avoid repeated freeze/thaw cycles. Suggest spin the vial prior to opening. The antibody solution should be gently mixed before use.
Note	For laboratory research only, not for drug, diagnostic or other use.

Bioinformation

Database links	<a href="#">GeneID: 6400 Human</a> <a href="#">Swiss-port # Q9UBV2 Human</a>
Background	The protein encoded by this gene is part of a protein complex required for the retrotranslocation or dislocation of misfolded proteins from the endoplasmic reticulum lumen to the cytosol, where they are degraded by the proteasome in a ubiquitin-dependent manner. Alternatively spliced transcript variants encoding different isoforms have been found for this gene. [provided by RefSeq, Oct 2011]
Research Area	Cancer antibody; Signaling Transduction antibody
Calculated Mw	89 kDa
PTM	N-glycosylated.

Images



ARG64582 anti-SEL1L antibody WB image

Western blot: 35 µg of HepG2 cell lysate (in RIPA buffer) stained with ARG64582 anti-SEL1L antibody at 0.3 µg/ml dilution and incubated at RT for 1 hour.