

ARG64601 anti-RELM beta antibody

Package: 100 µg
Store at: -20°C

Summary

Product Description	Goat Polyclonal antibody recognizes RELM beta
Tested Reactivity	Hu
Tested Application	IHC-P
Host	Goat
Clonality	Polyclonal
Isotype	IgG
Target Name	RELM beta
Species	Human
Immunogen	C-DSVMDKKIKDVLNS
Conjugation	Un-conjugated
Alternate Names	Cysteine-rich secreted protein FIZZ2; XCP2; FIZZ2; RELM-beta; Cysteine-rich secreted protein A12-alpha-like 1; RELMb; RELMbeta; Colon carcinoma-related gene protein; Resistin-like beta; HXCP2; Colon and small intestine-specific cysteine-rich protein; FIZZ1

Application Instructions

Application table	<table> <tr> <th>Application</th><th>Dilution</th></tr> <tr> <td>IHC-P</td><td>2 - 4 µg/ml</td></tr> </table>	Application	Dilution	IHC-P	2 - 4 µg/ml
Application	Dilution				
IHC-P	2 - 4 µg/ml				
Application Note	<p>IHC-P: Antigen Retrieval: Steam tissue section in Citrate buffer (pH 6.0).</p> <p>* The dilutions indicate recommended starting dilutions and the optimal dilutions or concentrations should be determined by the scientist.</p>				

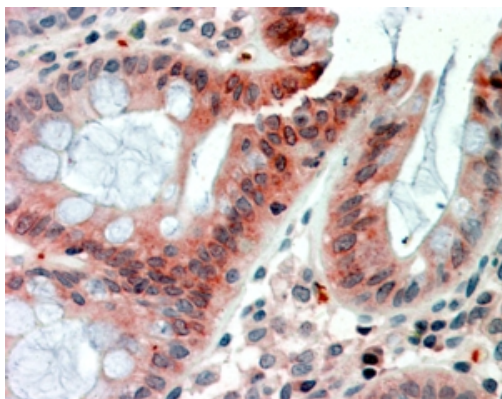
Properties

Form	Liquid
Purification	Purified from goat serum by antigen affinity chromatography.
Buffer	Tris saline (pH 7.3), 0.02% Sodium azide and 0.5% BSA.
Preservative	0.02% Sodium azide
Stabilizer	0.5% BSA
Concentration	0.5 mg/ml
Storage instruction	For continuous use, store undiluted antibody at 2-8°C for up to a week. For long-term storage, aliquot and store at -20°C or below. Storage in frost free freezers is not recommended. Avoid repeated freeze/thaw cycles. Suggest spin the vial prior to opening. The antibody solution should be gently mixed before use.
Note	For laboratory research only, not for drug, diagnostic or other use.

Bioinformation

Database links	GeneID: 84666 Human Swiss-port # Q9BQ08 Human
Gene Symbol	RETNLB
Gene Full Name	resistin like beta
Function	Probable hormone. [UniProt]
Research Area	Cancer antibody; Signaling Transduction antibody
Calculated Mw	12 kDa

Images



ARG64601 anti-RELM beta antibody IHC-P image

Immunohistochemistry: Paraffin embedded Human Colon. (Steamed antigen retrieval with citrate buffer pH 6) stained with ARG64601 anti-RELM beta antibody at 2.5g/ml dilution followed by AP-staining.