

ARG64647 anti-TMPRSS4 antibody

Package: 100 µg
Store at: -20°C

Summary

Product Description	Goat Polyclonal antibody recognizes TMPRSS4
Tested Reactivity	Hu
Predict Reactivity	Ms
Tested Application	WB
Specificity	This antibody is expected to recognize both reported isoforms (NP_063947.1 and NP_001077416.1).
Host	Goat
Clonality	Polyclonal
Isotype	IgG
Target Name	TMPRSS4
Species	Human
Immunogen	DSTRCNADDAYQGE
Conjugation	Un-conjugated
Alternate Names	MT-SP2; Transmembrane protease serine 4; Channel-activating protease 2; CAPH2; Membrane-type serine protease 2; TMPRSS3; EC 3.4.21.-

Application Instructions

Application table	<table> <tr> <th>Application</th><th>Dilution</th></tr> <tr> <td>WB</td><td>0.5 - 1.5 µg/ml</td></tr> </table>	Application	Dilution	WB	0.5 - 1.5 µg/ml
Application	Dilution				
WB	0.5 - 1.5 µg/ml				
Application Note	WB: Recommend incubate at RT for 1h. * The dilutions indicate recommended starting dilutions and the optimal dilutions or concentrations should be determined by the scientist.				
Positive Control	HEK293				
Observed Size	~ 48 kDa				

Properties

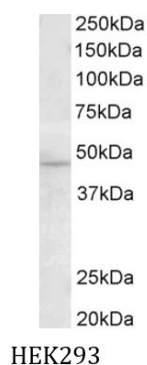
Form	Liquid
Purification	Purified from goat serum by antigen affinity chromatography.
Buffer	Tris saline (pH 7.3), 0.02% Sodium azide and 0.5% BSA.
Preservative	0.02% Sodium azide
Stabilizer	0.5% BSA
Concentration	0.5 mg/ml

Storage instruction	For continuous use, store undiluted antibody at 2-8°C for up to a week. For long-term storage, aliquot and store at -20°C or below. Storage in frost free freezers is not recommended. Avoid repeated freeze/thaw cycles. Suggest spin the vial prior to opening. The antibody solution should be gently mixed before use.
Note	For laboratory research only, not for drug, diagnostic or other use.

Bioinformation

Database links	GeneID: 56649 Human Swiss-port # Q9NRS4 Human
Background	<p>This gene encodes a member of the serine protease family. Serine proteases are known to be involved in a variety of biological processes, whose malfunction often leads to human diseases and disorders. This gene was identified as a gene overexpressed in pancreatic carcinoma. The encoded protein is membrane bound with a N-terminal anchor sequence and a glycosylated extracellular region containing the serine protease domain. Multiple transcript variants encoding different isoforms have been found for this gene. [provided by RefSeq, Jul 2008]</p>
Research Area	Cancer antibody; Cell Biology and Cellular Response antibody; Neuroscience antibody
Calculated Mw	48 kDa

Images



ARG64647 anti-TMPRSS4 antibody WB image

Western blot: 35 µg of HEK293 cell lysate (in RIPA buffer) stained with ARG64647 anti-TMPRSS4 antibody at 0.5 µg/ml dilution and incubated at RT for 1 hour.