

ARG64693 anti-SPHK1 antibody

Package: 100 µg
Store at: -20°C

Summary

Product Description	Goat Polyclonal antibody recognizes SPHK1
Tested Reactivity	Hu
Predict Reactivity	Ms, Rat, Cow, Dog
Tested Application	IP, WB
Specificity	This antibody is expected to recognise all three reported isoforms (NP_068807.2; NP_892010.2; NP_001136073.1). Reported variants represent identical protein (NP_001136073.1; NP_001136074.1).
Host	Goat
Clonality	Polyclonal
Isotype	IgG
Target Name	SPHK1
Species	Human
Immunogen	C-DVDLESEKYRRLGE
Conjugation	Un-conjugated
Alternate Names	SK 1; SPK 1; EC 2.7.1.91; SPHK; Sphingosine kinase 1

Application Instructions

Application table	Application	Dilution
	IP	Assay - dependent
	WB	2 - 3 µg/ml
Application Note	WB: Recommend incubate at RT for 1h. * The dilutions indicate recommended starting dilutions and the optimal dilutions or concentrations should be determined by the scientist.	

Properties

Form	Liquid
Purification	Purified from goat serum by antigen affinity chromatography.
Buffer	Tris saline (pH 7.3), 0.02% Sodium azide and 0.5% BSA.
Preservative	0.02% Sodium azide
Stabilizer	0.5% BSA
Concentration	0.5 mg/ml
Storage instruction	For continuous use, store undiluted antibody at 2-8°C for up to a week. For long-term storage, aliquot and store at -20°C or below. Storage in frost free freezers is not recommended. Avoid repeated freeze/thaw cycles. Suggest spin the vial prior to opening. The antibody solution should be gently mixed

before use.

Note

For laboratory research only, not for drug, diagnostic or other use.

Bioinformation

Database links

[GeneID: 8877 Human](#)

[Swiss-port # Q9NYA1 Human](#)

Background

The protein encoded by this gene catalyzes the phosphorylation of sphingosine to form sphingosine-1-phosphate (S1P), a lipid mediator with both intra- and extracellular functions. Intracellularly, S1P regulates proliferation and survival, and extracellularly, it is a ligand for cell surface G protein-coupled receptors. This protein, and its product S1P, play a key role in TNF-alpha signaling and the NF-kappa-B activation pathway important in inflammatory, antiapoptotic, and immune processes. Alternatively spliced transcript variants encoding different isoforms have been found for this gene. [provided by RefSeq, Sep 2011]

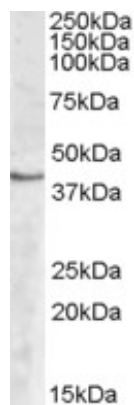
Research Area

Cancer antibody; Metabolism antibody; Signaling Transduction antibody

Calculated Mw

43 kDa

Images



ARG64693 anti-SPHK1 antibody WB image

Western Blot: Human Peripheral Blood Mononucleocyte lysate (35 µg protein in RIPA buffer) stained with ARG64693 anti-SPHK1 antibody at 2 µg/ml dilution.