

ARG64704 anti-PCSK6 antibody

Package: 100 µg
Store at: -20°C

Summary

Product Description	Goat Polyclonal antibody recognizes PCSK6
Tested Reactivity	Hu
Tested Application	IHC-P
Specificity	This antibody is expected to recognize reported isoforms a, b, g and h (NP_002561.1; NP_612192.1; NP_612193.1; NP_612194.1 resp.).
Host	Goat
Clonality	Polyclonal
Isotype	IgG
Target Name	PCSK6
Species	Human
Immunogen	C-YHTFSAHQSRSR
Conjugation	Un-conjugated
Alternate Names	Subtilisin/kexin-like protease PACE4; Subtilisin-like proprotein convertase 4; PACE4; Proprotein convertase subtilisin/kexin type 6; Paired basic amino acid cleaving enzyme 4; EC 3.4.21.-; SPC4

Application Instructions

Application table	Application	Dilution
	IHC-P	5 µg/ml
Application Note	IHC-P: Antigen Retrieval: Steam tissue section in Citrate buffer (pH 6.0). * The dilutions indicate recommended starting dilutions and the optimal dilutions or concentrations should be determined by the scientist.	

Properties

Form	Liquid
Purification	Purified from goat serum by antigen affinity chromatography.
Buffer	Tris saline (pH 7.3), 0.02% Sodium azide and 0.5% BSA.
Preservative	0.02% Sodium azide
Stabilizer	0.5% BSA
Concentration	0.5 mg/ml
Storage instruction	For continuous use, store undiluted antibody at 2-8°C for up to a week. For long-term storage, aliquot and store at -20°C or below. Storage in frost free freezers is not recommended. Avoid repeated freeze/thaw cycles. Suggest spin the vial prior to opening. The antibody solution should be gently mixed before use.

Bioinformation

Database links

[GeneID: 5046 Human](#)

[Swiss-port # P29122 Human](#)

Background

The protein encoded by this gene belongs to the subtilisin-like proprotein convertase family. The members of this family are proprotein convertases that process latent precursor proteins into their biologically active products. This encoded protein is a calcium-dependent serine endoprotease that can cleave precursor protein at their paired basic amino acid processing sites. Some of its substrates are - transforming growth factor beta related proteins, proalbumin, and von Willebrand factor. This gene is thought to play a role in tumor progression. Alternatively spliced transcript variants encoding different isoforms have been identified. [provided by RefSeq, Jul 2008]

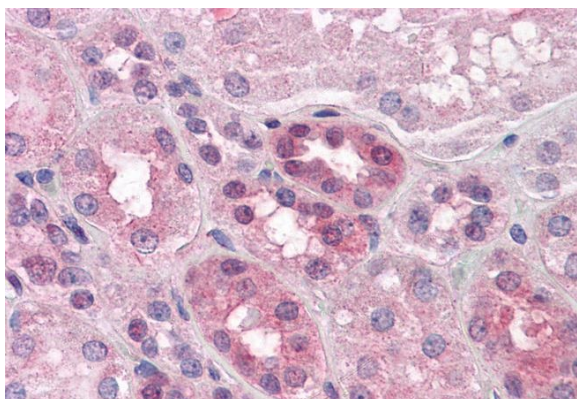
Research Area

Cell Biology and Cellular Response antibody

Calculated Mw

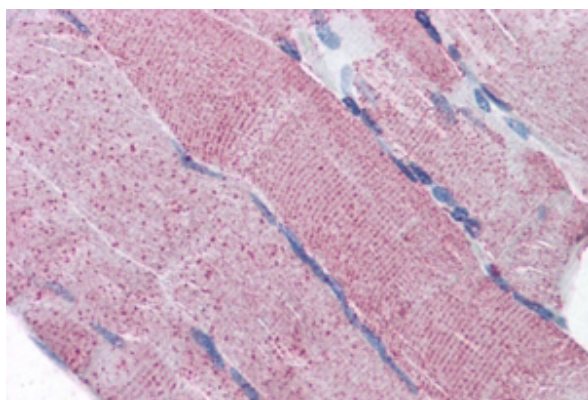
106 kDa

Images



ARG64704 anti-PCSK6 antibody IHC-P image

Immunohistochemistry: Paraffin-embedded Human kidney tissue. Antigen Retrieval: Steam tissue section in Citrate buffer (pH 6.0). The tissue section was stained with ARG64704 anti-PCSK6 antibody at 5 µg/ml dilution followed by AP-staining.



ARG64704 anti-PCSK6 antibody IHC-P image

Immunohistochemistry: paraffin embedded Human Skeletal Muscle. (Steamed antigen retrieval with citrate buffer pH 6) stained with ARG64704 anti-PCSK6 antibody at 5 µg/ml dilution followed by AP-staining.