

## ARG64705 anti-SAR1 antibody

Package: 100 µg  
Store at: -20°C

### Summary

Product Description	Goat Polyclonal antibody recognizes SAR1
Tested Reactivity	Hu, Ms
Predict Reactivity	Rat
Tested Application	IHC-P, WB
Host	Goat
Clonality	Polyclonal
Isotype	IgG
Target Name	SAR1
Species	Human
Immunogen	C-HSRLVESKVELNA
Conjugation	Un-conjugated
Alternate Names	masra2; COPII-associated small GTPase; Sara; SARA1; SAR1; GTP-binding protein SAR1a

### Application Instructions

Application table	Application	Dilution
	IHC-P	3 - 5 µg/ml
	WB	0.1 - 0.3 µg/ml
Application Note	WB: Recommend incubate at RT for 1h. IHC-P: Antigen Retrieval: Steam tissue section in Citrate buffer (pH 6.0). * The dilutions indicate recommended starting dilutions and the optimal dilutions or concentrations should be determined by the scientist.	

### Properties

Form	Liquid
Purification	Purified from goat serum by antigen affinity chromatography.
Buffer	Tris saline (pH 7.3), 0.02% Sodium azide and 0.5% BSA.
Preservative	0.02% Sodium azide
Stabilizer	0.5% BSA
Concentration	0.5 mg/ml
Storage instruction	For continuous use, store undiluted antibody at 2-8°C for up to a week. For long-term storage, aliquot and store at -20°C or below. Storage in frost free freezers is not recommended. Avoid repeated freeze/thaw cycles. Suggest spin the vial prior to opening. The antibody solution should be gently mixed before use.

## Bioinformation

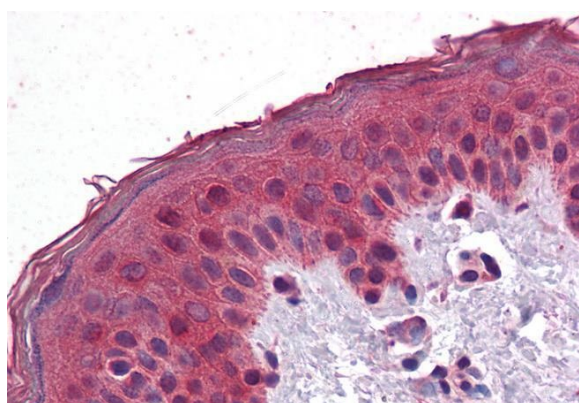
Database links	<a href="#">GeneID: 56681 Human</a> <a href="#">Swiss-port # Q9NR31 Human</a>
Gene Symbol	SAR1A
Gene Full Name	secretion associated, Ras related GTPase 1A
Function	Involved in transport from the endoplasmic reticulum to the Golgi apparatus (By similarity). Required to maintain SEC16A localization at discrete locations on the ER membrane perhaps by preventing its dissociation. SAR1A-GTP-dependent assembly of SEC16A on the ER membrane forms an organized scaffold defining endoplasmic reticulum exit sites (ERES). [UniProt]
Research Area	Signaling Transduction antibody
Calculated Mw	22 kDa

## Images



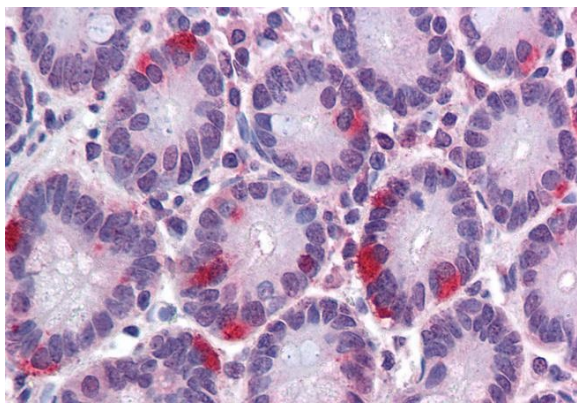
ARG64705 anti-SAR1 antibody WB image

Western Blot: NIH3T3 lysate (35 µg protein in RIPA buffer) stained with ARG64705 anti-SAR1 antibody at 0.1 µg/ml dilution.



ARG64705 anti-SAR1 antibody IHC-P image

Immunohistochemistry: Paraffin-embedded Human skin tissue. Antigen Retrieval: Steam tissue section in Citrate buffer (pH 6.0). The tissue section was stained with ARG64705 anti-SAR1 antibody at 3.75 µg/ml dilution followed by AP-staining.



ARG64705 anti-SAR1 antibody IHC-P image

Immunohistochemistry: Paraffin-embedded Human small intestine tissue. Antigen Retrieval: Steam tissue section in Citrate buffer (pH 6.0). The tissue section was stained with ARG64705 anti-SAR1 antibody at 3.75 µg/ml dilution followed by AP-staining.