

ARG64743 anti-Clathrin light chain antibody

Package: 100 µg
Store at: -20°C

Summary

Product Description	Goat Polyclonal antibody recognizes Clathrin light chain
Tested Reactivity	Hu
Predict Reactivity	Ms, Rat, Cow, Dog
Tested Application	IHC-P, WB
Specificity	This antibody is expected to recognize all reported isoforms of light chains a and b.
Host	Goat
Clonality	Polyclonal
Isotype	IgG
Target Name	Clathrin light chain
Species	Human
Immunogen	CDFNPKSSKQAKD
Conjugation	Un-conjugated
Alternate Names	Clathrin light chain A; Lca; LCA

Application Instructions

Application table	Application	Dilution
	IHC-P	2.5 µg/ml
	WB	0.1 - 0.3 µg/ml
Application Note	WB: Recommend incubate at RT for 1h. IHC-P: Antigen Retrieval: Steam tissue section in Citrate buffer (pH 6.0). * The dilutions indicate recommended starting dilutions and the optimal dilutions or concentrations should be determined by the scientist.	

Properties

Form	Liquid
Purification	Purified from goat serum by antigen affinity chromatography.
Buffer	Tris saline (pH 7.3), 0.02% Sodium azide and 0.5% BSA.
Preservative	0.02% Sodium azide
Stabilizer	0.5% BSA
Concentration	0.5 mg/ml
Storage instruction	For continuous use, store undiluted antibody at 2-8°C for up to a week. For long-term storage, aliquot and store at -20°C or below. Storage in frost free freezers is not recommended. Avoid repeated freeze/thaw cycles. Suggest spin the vial prior to opening. The antibody solution should be gently mixed

before use.

Note

For laboratory research only, not for drug, diagnostic or other use.

Bioinformation

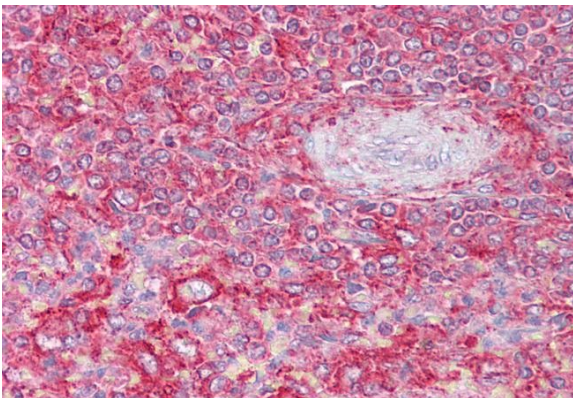
Database links	GeneID: 1211 Human Swiss-port # P09496 Human
Gene Symbol	CLTA
Gene Full Name	clathrin, light chain A
Background	Clathrin is a large, soluble protein composed of heavy and light chains. It functions as the main structural component of the lattice-type cytoplasmic face of coated pits and vesicles which entrap specific macromolecules during receptor-mediated endocytosis. This gene encodes one of two clathrin light chain proteins which are believed to function as regulatory elements. Alternative splicing results in multiple transcript variants. Related pseudogenes have been identified on chromosomes 8 and 12. [provided by RefSeq, May 2010]
Function	Clathrin is the major protein of the polyhedral coat of coated pits and vesicles. [UniProt]
Research Area	Controls and Markers antibody; Neuroscience antibody; Signaling Transduction antibody
Calculated Mw	27 kDa

Images



ARG64743 anti-Clathrin light chain antibody WB image

Western blot: 35 µg of Human Frontal Cortex lysate stained with ARG64743 anti-Clathrin light chain antibody at 0.1 µg/ml dilution.



ARG64743 anti-Clathrin light chain antibody IHC-P image

Immunohistochemistry: Paraffin-embedded Human spleen tissue. Antigen Retrieval: Steam tissue section in Citrate buffer (pH 6.0). The tissue section was stained with ARG64743 anti-Clathrin light chain antibody at 2.5 µg/ml dilution followed by AP-staining.