

ARG64753 anti-MTHFD1 antibody

Package: 100 µg
Store at: -20°C

Summary

Product Description	Goat Polyclonal antibody recognizes MTHFD1
Tested Reactivity	Hu
Predict Reactivity	Ms, Rat
Tested Application	IHC-P, WB
Host	Goat
Clonality	Polyclonal
Isotype	IgG
Target Name	MTHFD1
Species	Human
Immunogen	RGDLNDCFIPCTPK
Conjugation	Un-conjugated
Alternate Names	C-1-tetrahydrofolate synthase, cytoplasmic; EC 3.5.4.9; EC 1.5.1.5; C1-THF synthase; EC 6.3.4.3; MTHFC; MTHFD

Application Instructions

Application table	Application	Dilution
	IHC-P	Assay - dependent
	WB	1 - 3 µg/ml
Application Note	WB: Recommend incubate at RT for 1h. IHC-P: Antigen Retrieval: Steam tissue section in Citrate buffer (pH 6.0). * The dilutions indicate recommended starting dilutions and the optimal dilutions or concentrations should be determined by the scientist.	

Properties

Form	Liquid
Purification	Purified from goat serum by antigen affinity chromatography.
Buffer	Tris saline (pH 7.3), 0.02% Sodium azide and 0.5% BSA.
Preservative	0.02% Sodium azide
Stabilizer	0.5% BSA
Concentration	0.5 mg/ml
Storage instruction	For continuous use, store undiluted antibody at 2-8°C for up to a week. For long-term storage, aliquot and store at -20°C or below. Storage in frost free freezers is not recommended. Avoid repeated freeze/thaw cycles. Suggest spin the vial prior to opening. The antibody solution should be gently mixed

before use.

Note

For laboratory research only, not for drug, diagnostic or other use.

Bioinformation

Database links

[GeneID: 4522 Human](#)

[Swiss-port # P11586 Human](#)

Background

This gene encodes a protein that possesses three distinct enzymatic activities, 5,10-methylenetetrahydrofolate dehydrogenase, 5,10-methenyltetrahydrofolate cyclohydrolase and 10-formyltetrahydrofolate synthetase. Each of these activities catalyzes one of three sequential reactions in the interconversion of 1-carbon derivatives of tetrahydrofolate, which are substrates for methionine, thymidylate, and de novo purine syntheses. The trifunctional enzymatic activities are conferred by two major domains, an aminoterminal portion containing the dehydrogenase and cyclohydrolase activities and a larger synthetase domain. [provided by RefSeq, Jul 2008]

Research Area

Cell Biology and Cellular Response antibody; Metabolism antibody; Signaling Transduction antibody

Calculated Mw

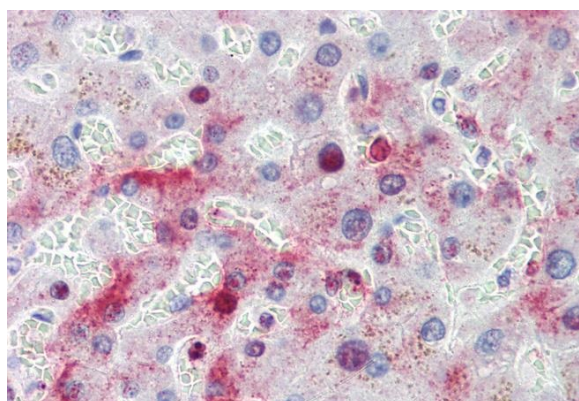
102 kDa

Images



ARG64753 anti-MTHFD1 antibody WB image

Western Blot: Human Substantia Nigra lysate (35 µg protein in RIPA buffer) stained with ARG64753 anti-MTHFD1 antibody at 1 µg/ml dilution.



ARG64753 anti-MTHFD1 antibody IHC-P image

Immunohistochemistry: Paraffin-embedded Human liver tissue. Antigen Retrieval: Steam tissue section in Citrate buffer (pH 6.0). The tissue section was stained with ARG64753 anti-MTHFD1 antibody at 3.75 µg/ml dilution followed by AP-staining.