

## ARG64766 anti-APOL1 antibody

Package: 100 µg  
Store at: -20°C

### Summary

Product Description	Goat Polyclonal antibody recognizes APOL1
Tested Reactivity	Hu
Tested Application	WB
Specificity	This antibody is expected to recognize both reported isoforms (NP_003652.2; NP_663318.1).
Host	Goat
Clonality	Polyclonal
Isotype	IgG
Target Name	APOL1
Species	Human
Immunogen	C-NNNYKILQADQE
Conjugation	Un-conjugated
Alternate Names	APO-L; ApoL-I; APOL; FSGS4; Apolipoprotein L; Apolipoprotein L-I; Apolipoprotein L1; Apo-L; APOL-I; ApoL

### Application Instructions

Application table	Application	Dilution
	WB	0.1 - 0.3 µg/ml
Application Note	WB: Recommend incubate at RT for 1h. * The dilutions indicate recommended starting dilutions and the optimal dilutions or concentrations should be determined by the scientist.	

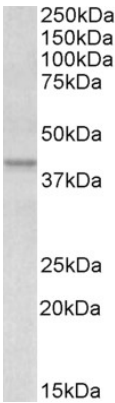
### Properties

Form	Liquid
Purification	Purified from goat serum by antigen affinity chromatography.
Buffer	Tris saline (pH 7.3), 0.02% Sodium azide and 0.5% BSA.
Preservative	0.02% Sodium azide
Stabilizer	0.5% BSA
Concentration	0.5 mg/ml
Storage instruction	For continuous use, store undiluted antibody at 2-8°C for up to a week. For long-term storage, aliquot and store at -20°C or below. Storage in frost free freezers is not recommended. Avoid repeated freeze/thaw cycles. Suggest spin the vial prior to opening. The antibody solution should be gently mixed before use.
Note	For laboratory research only, not for drug, diagnostic or other use.

Bioinformation

Database links	<a href="#">GeneID: 8542 Human</a>  <a href="#">Swiss-port # O14791 Human</a>
Background	This gene encodes a secreted high density lipoprotein which binds to apolipoprotein A-I. Apolipoprotein A-I is a relatively abundant plasma protein and is the major apoprotein of HDL. It is involved in the formation of most cholesteryl esters in plasma and also promotes efflux of cholesterol from cells. This apolipoprotein L family member may play a role in lipid exchange and transport throughout the body, as well as in reverse cholesterol transport from peripheral cells to the liver. Several different transcript variants encoding different isoforms have been found for this gene. [provided by RefSeq, Nov 2008]
Research Area	Cell Biology and Cellular Response antibody; Metabolism antibody
Calculated Mw	44 kDa
PTM	Phosphorylated by FAM20C in the extracellular medium.

Images



ARG64766 anti-APOL1 antibody WB image

Western Blot: Human Placenta lysate (35 µg protein in RIPA buffer) stained with ARG64766 anti-APOL1 antibody at 0.1 µg/ml dilution.