

ARG64785 anti-APOL6 antibody

Package: 100 µg
Store at: -20°C

Summary

Product Description	Goat Polyclonal antibody recognizes APOL6
Tested Reactivity	Hu
Tested Application	IHC-P, WB
Host	Goat
Clonality	Polyclonal
Isotype	IgG
Target Name	APOL6
Species	Human
Immunogen	QRDEDDAPLCED
Conjugation	Un-conjugated
Alternate Names	Apolipoprotein L6; Apolipoprotein L-VI; APOLVI; ApoL-VI; APOL-VI

Application Instructions

Application table	Application	Dilution
	IHC-P	5 - 10 µg/ml
	WB	1 - 3 µg/ml
Application Note	<p>IHC-P: Antigen Retrieval: Microwaved tissue section in Tris/EDTA buffer (pH 9.0). WB: Recommend incubate at RT for 1h. * The dilutions indicate recommended starting dilutions and the optimal dilutions or concentrations should be determined by the scientist.</p>	

Properties

Form	Liquid
Purification	Purified from goat serum by antigen affinity chromatography.
Buffer	Tris saline (pH 7.3), 0.02% Sodium azide and 0.5% BSA.
Preservative	0.02% Sodium azide
Stabilizer	0.5% BSA
Concentration	0.5 mg/ml
Storage instruction	For continuous use, store undiluted antibody at 2-8°C for up to a week. For long-term storage, aliquot and store at -20°C or below. Storage in frost free freezers is not recommended. Avoid repeated freeze/thaw cycles. Suggest spin the vial prior to opening. The antibody solution should be gently mixed before use.
Note	For laboratory research only, not for drug, diagnostic or other use.

Bioinformation

Database links [GeneID: 80830 Human](#)

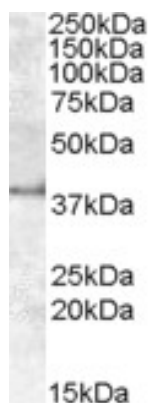
[Swiss-port # Q9BWW8 Human](#)

Background This gene is a member of the apolipoprotein L gene family. The encoded protein is found in the cytoplasm, where it may affect the movement of lipids or allow the binding of lipids to organelles. [provided by RefSeq, Jul 2008]

Research Area Cell Biology and Cellular Response antibody; Cell Death antibody; Metabolism antibody

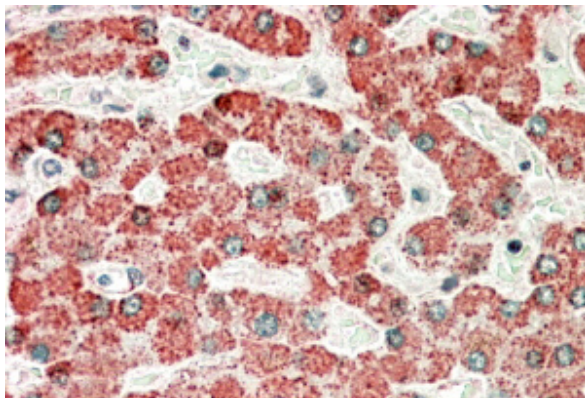
Calculated Mw 38 kDa

Images



ARG64785 anti-APOL6 antibody WB image

Western blot: Human Kidney lysate (35 µg protein in RIPA buffer) stained with ARG64785 anti-APOL6 antibody at 1 µg/ml dilution.



ARG64785 anti-APOL6 antibody IHC-P image

Immunohistochemistry: Paraffin embedded Human Liver. (Microwaved antigen retrieval with Tris/EDTA buffer pH9) stained with ARG64785 anti-APOL6 antibody at 5 µg/ml dilution followed by HRP-staining.