

ARG64909 anti-PSPH / Phosphoserine Phosphatase antibody

Package: 100 µg
Store at: -20°C

Summary

Product Description	Goat Polyclonal antibody recognizes PSPH / Phosphoserine Phosphatase
Tested Reactivity	Hu, Ms
Predict Reactivity	Rat
Tested Application	WB
Host	Goat
Clonality	Polyclonal
Isotype	IgG
Target Name	PSPH / Phosphoserine Phosphatase
Species	Human
Immunogen	C-RQQVKDNAKWYITD
Conjugation	Un-conjugated
Alternate Names	PSPase; PSPHD; EC 3.1.3.3; L-3-phosphoserine phosphatase; O-phosphoserine phosphohydrolase; PSP; Phosphoserine phosphatase

Application Instructions

Application table	Application	Dilution
	WB	0.05 - 1 µg/ml
Application Note	WB: Recommend incubate at RT for 1h. * The dilutions indicate recommended starting dilutions and the optimal dilutions or concentrations should be determined by the scientist.	

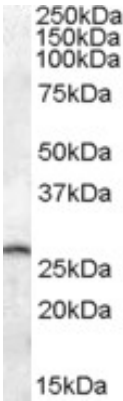
Properties

Form	Liquid
Purification	Purified from goat serum by antigen affinity chromatography.
Buffer	Tris saline (pH 7.3), 0.02% Sodium azide and 0.5% BSA.
Preservative	0.02% Sodium azide
Stabilizer	0.5% BSA
Concentration	0.5 mg/ml
Storage instruction	For continuous use, store undiluted antibody at 2-8°C for up to a week. For long-term storage, aliquot and store at -20°C or below. Storage in frost free freezers is not recommended. Avoid repeated freeze/thaw cycles. Suggest spin the vial prior to opening. The antibody solution should be gently mixed before use.
Note	For laboratory research only, not for drug, diagnostic or other use.

Bioinformation

Database links	GeneID: 100678 Mouse GeneID: 5723 Human Swiss-port # P78330 Human Swiss-port # Q99LS3 Mouse
Background	The protein encoded by this gene belongs to a subfamily of the phosphotransferases. This encoded enzyme is responsible for the third and last step in L-serine formation. It catalyzes magnesium-dependent hydrolysis of L-phosphoserine and is also involved in an exchange reaction between L-serine and L-phosphoserine. Deficiency of this protein is thought to be linked to Williams syndrome. [provided by RefSeq, Jul 2008]
Research Area	Metabolism antibody; Signaling Transduction antibody
Calculated Mw	25 kDa

Images



ARG64909 anti-PSPH / Phosphoserine Phosphatase antibody WB image

Western blot: 35 µg of Mouse Brain lysate stained with ARG64909 anti-PSPH / Phosphoserine Phosphatase antibody at 0.05 µg/ml dilution.