

## ARG64919 anti-UBE2F / NCE2 antibody

Package: 100 µg  
Store at: -20°C

### Summary

Product Description	Goat Polyclonal antibody recognizes UBE2F / NCE2
Tested Reactivity	Hu, Ms
Predict Reactivity	Cow, Rat, Dog
Tested Application	IHC-P, WB
Host	Goat
Clonality	Polyclonal
Isotype	IgG
Target Name	UBE2F / NCE2
Species	Human
Immunogen	C-HLRDKEDFRNKVDD
Conjugation	Un-conjugated
Alternate Names	NEDD8-conjugating enzyme 2; EC 6.3.2.-; NEDD8-conjugating enzyme UBE2F; Ubiquitin-conjugating enzyme E2 F; NEDD8 carrier protein UBE2F; NCE2; NEDD8 protein ligase UBE2F

### Application Instructions

Application table	Application	Dilution
	IHC-P	2 - 4 µg/ml
	WB	0.05 - 0.2 µg/ml
Application Note	WB: Recommend incubate at RT for 1h. * The dilutions indicate recommended starting dilutions and the optimal dilutions or concentrations should be determined by the scientist.	

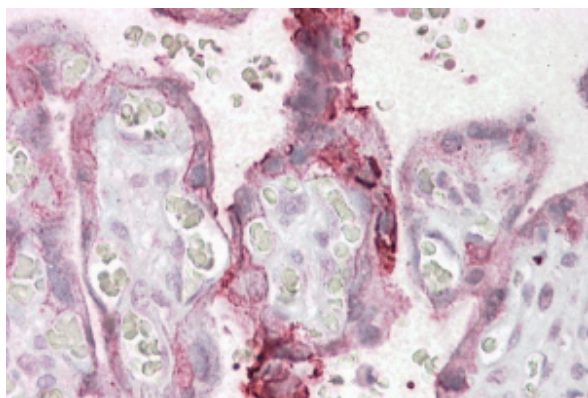
### Properties

Form	Liquid
Purification	Purified from goat serum by antigen affinity chromatography.
Buffer	Tris saline (pH 7.3), 0.02% Sodium azide and 0.5% BSA.
Preservative	0.02% Sodium azide
Stabilizer	0.5% BSA
Concentration	0.5 mg/ml
Storage instruction	For continuous use, store undiluted antibody at 2-8°C for up to a week. For long-term storage, aliquot and store at -20°C or below. Storage in frost free freezers is not recommended. Avoid repeated freeze/thaw cycles. Suggest spin the vial prior to opening. The antibody solution should be gently mixed before use.

## Bioinformation

Database links	<a href="#">GeneID: 140739 Human</a> <a href="#">GeneID: 67921 Mouse</a> <a href="#">Swiss-port # Q969M7 Human</a> <a href="#">Swiss-port # Q9CY34 Mouse</a>
Gene Symbol	UBE2F
Gene Full Name	ubiquitin-conjugating enzyme E2F (putative)
Function	Accepts the ubiquitin-like protein NEDD8 from the UBA3-NAE1 E1 complex and catalyzes its covalent attachment to other proteins. The specific interaction with the E3 ubiquitin ligase RBX2, but not RBX1, suggests that the RBX2-UBE2F complex neddylates specific target proteins, such as CUL5. [UniProt]
Research Area	Cell Biology and Cellular Response antibody; Gene Regulation antibody
Calculated Mw	21 kDa
PTM	The acetylation of Met-1 increases affinity for DCUN1D3 by about 2 orders of magnitude and is crucial for NEDD8 transfer to cullins.

## Images



ARG64919 anti-UBE2F / NCE2 antibody IHC-P image

Immunohistochemistry: Paraffin-embedded Human placenta tissue stained with ARG64919 anti-UBE2F / NCE2 antibody shows membrane staining in trophoblasts. Recommended concentration: 2.5 - 3.8 µg/ml dilution.



ARG64919 anti-UBE2F / NCE2 antibody WB image

Western blot: 35 µg of Mouse liver lysate (in RIPA buffer) stained with ARG64919 anti-UBE2F / NCE2 antibody at 0.05 µg/ml dilution and incubated at RT for 1 hour.