

ARG64928 anti-Connexin 43 antibody

Package: 100 µg
Store at: -20°C

Summary

| | |
|---------------------|--------------------------------------------------------------------------------------------------------------------------------------------|
| Product Description | Goat Polyclonal antibody recognizes Connexin 43 |
| Tested Reactivity | Hu, Rat |
| Predict Reactivity | Dog, Pig |
| Tested Application | WB |
| Host | Goat |
| Clonality | Polyclonal |
| Isotype | IgG |
| Target Name | Connexin 43 |
| Species | Human |
| Immunogen | C-QPFDPPDDNQNSKK |
| Conjugation | Un-conjugated |
| Alternate Names | Gap junction 43 kDa heart protein; CX43; PPKCA; CMDR; Gap junction alpha-1 protein; HSS; AVSD3; Connexin-43; HLHS1; EKVP; GJAL; ODDD; Cx43 |

Application Instructions

| Application table | Application | Dilution |
|-------------------|------------------------------------------------------------------------------------------------------------------------------------------------------------------------------------|---------------|
| | WB | 0.1 - 1 µg/ml |
| Application Note | WB: Recommend incubate at RT for 1h. * The dilutions indicate recommended starting dilutions and the optimal dilutions or concentrations should be determined by the scientist. | |

Properties

| | |
|---------------------|----------------------------------------------------------------------------------------------------------------------------------------------------------------------------------------------------------------------------------------------------------------------------------------------------------------------------|
| Form | Liquid |
| Purification | Purified from goat serum by antigen affinity chromatography. |
| Buffer | Tris saline (pH 7.3), 0.02% Sodium azide and 0.5% BSA. |
| Preservative | 0.02% Sodium azide |
| Stabilizer | 0.5% BSA |
| Concentration | 0.5 mg/ml |
| Storage instruction | For continuous use, store undiluted antibody at 2-8°C for up to a week. For long-term storage, aliquot and store at -20°C or below. Storage in frost free freezers is not recommended. Avoid repeated freeze/thaw cycles. Suggest spin the vial prior to opening. The antibody solution should be gently mixed before use. |
| Note | For laboratory research only, not for drug, diagnostic or other use. |

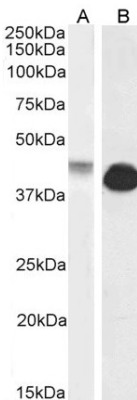
| | |
|----------------|------------------------------------------------------------------------------------------------------------------------------------------------------------------------------------------------------------------------------------------------------------------------------------------------------------------------------------------------------------------------------------------------------------------------------------------------------------------------------------------------------------------------------------------------------------------------------------------------------------------------------------------------------------------------------------------------------------------------------------------------------------------------------------|
| Database links | GeneID: 24392 Rat GeneID: 2697 Human Swiss-port # P08050 Rat Swiss-port # P17302 Human |
| Background | This gene is a member of the connexin gene family. The encoded protein is a component of gap junctions, which are composed of arrays of intercellular channels that provide a route for the diffusion of low molecular weight materials from cell to cell. The encoded protein is the major protein of gap junctions in the heart that are thought to have a crucial role in the synchronized contraction of the heart and in embryonic development. A related intronless pseudogene has been mapped to chromosome 5. Mutations in this gene have been associated with oculodentodigital dysplasia and heart malformations. [provided by RefSeq, Jul 2008] |
| Research Area | Cell Biology and Cellular Response antibody; Signaling Transduction antibody; Cardiomyocyte Cell Surface Marker antibody |
| Calculated Mw | 43 kDa |
| PTM | Phosphorylated at Ser-368 by PRKCG; phosphorylation induces disassembly of gap junction plaques and inhibition of gap junction activity (By similarity). Phosphorylation at Ser-325, Ser-328 and Ser-330 by CK1 modulates gap junction assembly. Phosphorylation at Ser-368 by PRKCD triggers its internalization into small vesicles leading to proteasome-mediated degradation (By similarity). Sumoylated with SUMO1, SUMO2 and SUMO3, which may regulate the level of functional Cx43 gap junctions at the plasma membrane. May be desumoylated by SENP1 or SENP2. S-nitrosylation at Cys-271 is enriched at the muscle endothelial gap junction in arteries, it augments channel permeability and may regulate of smooth muscle cell to endothelial cell communication. |

Images



ARG64928 anti-Connexin 43 antibody WB image

Western blot: Rat Brain lysate (35 µg protein in RIPA buffer) stained with ARG64928 anti-Connexin 43 antibody at 0.3 µg/ml dilution.



ARG64928 anti-Connexin 43 antibody WB image

Western blot: 35 µg of Human (A) and Rat (B) heart lysates (in RIPA buffer) stained with ARG64928 anti-Connexin 43 antibody at 0.1 µg/ml (A) and 1 µg/ml (B) dilutions and incubated at RT for 1 hour.