

## ARG64958 anti-CD11a / LFA1 alpha antibody

Package: 100 µg  
Store at: -20°C

### Summary

Product Description	Goat Polyclonal antibody recognizes CD11a / LFA1 alpha
Tested Reactivity	Hu
Tested Application	IHC-P, WB
Specificity	This antibody is expected to recognize both reported isoforms (NP_002200.2; NP_001107852.1).
Host	Goat
Clonality	Polyclonal
Isotype	IgG
Target Name	CD11a / LFA1 alpha
Species	Human
Immunogen	C-YQVRIQPSIHDHN
Conjugation	Un-conjugated
Alternate Names	Leukocyte adhesion glycoprotein LFA-1 alpha chain; LFA1A; LFA-1A; Integrin alpha-L; CD11A; Leukocyte function-associated molecule 1 alpha chain; LFA-1; CD11 antigen-like family member A; CD antigen CD11a

### Application Instructions

Application table	Application	Dilution
	IHC-P	2 - 4 µg/ml
	WB	0.5 - 2 µg/ml
Application Note	WB: Recommend incubate at RT for 1h. IHC-P: Antigen Retrieval: Microwaved or steamed tissue section in Citrate buffer (pH 6.0). * The dilutions indicate recommended starting dilutions and the optimal dilutions or concentrations should be determined by the scientist.	

### Properties

Form	Liquid
Purification	Purified from goat serum by antigen affinity chromatography.
Buffer	Tris saline (pH 7.3), 0.02% Sodium azide and 0.5% BSA.
Preservative	0.02% Sodium azide
Stabilizer	0.5% BSA
Concentration	0.5 mg/ml
Storage instruction	For continuous use, store undiluted antibody at 2-8°C for up to a week. For long-term storage, aliquot and store at -20°C or below. Storage in frost free freezers is not recommended. Avoid repeated

freeze/thaw cycles. Suggest spin the vial prior to opening. The antibody solution should be gently mixed before use.

Note

For laboratory research only, not for drug, diagnostic or other use.

## Bioinformation

Database links

[GeneID: 3683 Human](#)

[Swiss-port # P20701 Human](#)

Background

ITGAL encodes the integrin alpha L chain. Integrins are heterodimeric integral membrane proteins composed of an alpha chain and a beta chain. This I-domain containing alpha integrin combines with the beta 2 chain (ITGB2) to form the integrin lymphocyte function-associated antigen-1 (LFA-1), which is expressed on all leukocytes. LFA-1 plays a central role in leukocyte intercellular adhesion through interactions with its ligands, ICAMs 1-3 (intercellular adhesion molecules 1 through 3), and also functions in lymphocyte costimulatory signaling. Two transcript variants encoding different isoforms have been found for this gene. [provided by RefSeq, Jul 2008]

Research Area

Developmental Biology antibody; Immune System antibody; Signaling Transduction antibody

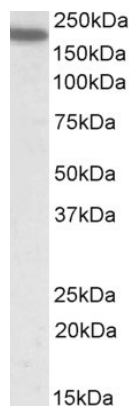
Calculated Mw

129 kDa

PTM

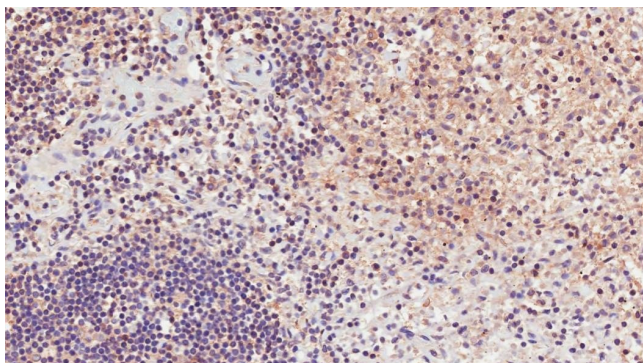
In resting T-cells, up to 40% of surface ITGAL is constitutively phosphorylated. Phosphorylation causes conformational changes needed for ligand binding and is necessary for activation by some physiological agents.

## Images



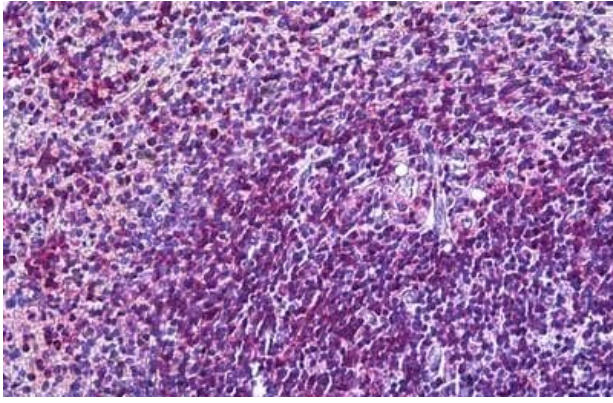
ARG64958 anti-CD11a / LFA1 alpha antibody WB image

Western blot: Human Spleen lysate (35 µg protein in RIPA buffer) stained with ARG64958 anti-CD11a / LFA1 alpha antibody at 0.5 µg/ml dilution.



ARG64958 anti-CD11a / LFA1 alpha antibody IHC-P image

Immunohistochemistry: Paraffin-embedded Human lymph node tissue. Antigen Retrieval: Microwaved tissue section in Citrate buffer (pH 6.0). The tissue section was stained with ARG64958 anti-CD11a / LFA1 alpha antibody at 2 µg/ml dilution followed by HRP-staining.



#### ARG64958 anti-CD11a / LFA1 alpha antibody IHC-P image

Immunohistochemistry: Paraffin-embedded Human spleen tissue.  
Antigen Retrieval: Steam tissue section in Citrate buffer (pH 6.0). The tissue section was stained with ARG64958 anti-CD11a / LFA1 alpha antibody at 3.75 µg/ml dilution followed by AP-staining.