

ARG64985 anti-Podoplanin antibody

Package: 100 µg
Store at: -20°C

Summary

Product Description	Goat Polyclonal antibody recognizes Podoplanin
Tested Reactivity	Hu
Predict Reactivity	Dog
Tested Application	WB
Specificity	This antibody is expected to recognize all isoforms (NP_006465.3; NP_938203.2; NP_001006625.1; NP_001006626.1).
Host	Goat
Clonality	Polyclonal
Isotype	IgG
Target Name	Podoplanin
Species	Human
Immunogen	C-EKVDGDTQTTVEKD
Conjugation	Un-conjugated
Alternate Names	PDPN; T1A2; T1A; GP36; Aggrus; Gp38; T1A-2; Glycoprotein 36; PA2.26 antigen; T1A; AGGRUS; HT1A-1; OTS8; Gp36; PA2.26; T1-alpha; Podoplanin; GP40

Application Instructions

Application table	Application	Dilution
	WB	1 - 3 µg/ml
Application Note	WB: Recommend incubate at RT for 1h. * The dilutions indicate recommended starting dilutions and the optimal dilutions or concentrations should be determined by the scientist.	

Properties

Form	Liquid
Purification	Purified from goat serum by antigen affinity chromatography.
Buffer	Tris saline (pH 7.3), 0.02% Sodium azide and 0.5% BSA.
Preservative	0.02% Sodium azide
Stabilizer	0.5% BSA
Concentration	0.5 mg/ml
Storage instruction	For continuous use, store undiluted antibody at 2-8°C for up to a week. For long-term storage, aliquot and store at -20°C or below. Storage in frost free freezers is not recommended. Avoid repeated freeze/thaw cycles. Suggest spin the vial prior to opening. The antibody solution should be gently mixed

before use.

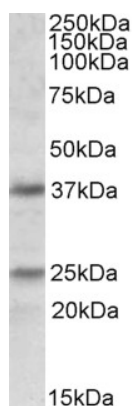
Note

For laboratory research only, not for drug, diagnostic or other use.

Bioinformation

Database links	GeneID: 10630 Human Swiss-port # Q86YL7 Human
Gene Symbol	PDPN
Gene Full Name	podoplanin
Background	This gene encodes a type-I integral membrane glycoprotein with diverse distribution in human tissues. The physiological function of this protein may be related to its mucin-type character. The homologous protein in other species has been described as a differentiation antigen and influenza-virus receptor. The specific function of this protein has not been determined but it has been proposed as a marker of lung injury. Alternatively spliced transcript variants encoding different isoforms have been identified. [provided by RefSeq, Jul 2008]
Research Area	Cell Biology and Cellular Response antibody; Controls and Markers antibody
Calculated Mw	17 kDa
PTM	Extensively O-glycosylated. Contains sialic acid residues. O-glycosylation is necessary for platelet aggregation activity. The N-terminus is blocked. [UniProt]

Images



ARG64985 anti-Podoplanin antibody WB image

Western blot: Human Cerebellum lysate (35 µg protein in RIPA buffer) stained with ARG64985 anti-Podoplanin antibody at 1 µg/ml dilution.