

## ARG65002 anti-SDHAF1 antibody

Package: 100 µg  
Store at: -20°C

### Summary

Product Description	Goat Polyclonal antibody recognizes SDHAF1
Tested Reactivity	Hu
Predict Reactivity	Ms, Dog
Tested Application	IHC-P, WB
Host	Goat
Clonality	Polyclonal
Isotype	IgG
Target Name	SDHAF1
Species	Human
Immunogen	C-HDSTGAPETRPDGR
Conjugation	Un-conjugated
Alternate Names	Succinate dehydrogenase assembly factor 1, mitochondrial; SDHAF1; SDH assembly factor 1; LYRM8; LYR motif-containing protein 8

### Application Instructions

Application table	Application	Dilution
	IHC-P	5 µg/ml
	WB	0.3 - 1 µg/ml
Application Note	WB: Recommend incubate at RT for 1h. IHC-P: Antigen Retrieval: Steam tissue section in Citrate buffer (pH 6.0). * The dilutions indicate recommended starting dilutions and the optimal dilutions or concentrations should be determined by the scientist.	

### Properties

Form	Liquid
Purification	Purified from goat serum by antigen affinity chromatography.
Buffer	Tris saline (pH 7.3), 0.02% Sodium azide and 0.5% BSA.
Preservative	0.02% Sodium azide
Stabilizer	0.5% BSA
Concentration	0.5 mg/ml
Storage instruction	For continuous use, store undiluted antibody at 2-8°C for up to a week. For long-term storage, aliquot and store at -20°C or below. Storage in frost free freezers is not recommended. Avoid repeated freeze/thaw cycles. Suggest spin the vial prior to opening. The antibody solution should be gently mixed

before use.

#### Note

For laboratory research only, not for drug, diagnostic or other use.

## Bioinformation

#### Database links

[GeneID: 644096 Human](#)

[Swiss-port # A6NFY7 Human](#)

#### Background

The succinate dehydrogenase (SDH) complex (or complex II) of the mitochondrial respiratory chain is composed of 4 individual subunits. The protein encoded by this gene resides in the mitochondria, and is essential for SDH assembly, but does not physically associate with the complex in vivo. Mutations in this gene are associated with SDH-defective infantile leukoencephalopathy (mitochondrial complex II deficiency).[provided by RefSeq, Mar 2010]

#### Highlight

Related products:

[Anti-Goat IgG secondary antibodies:](#)

Related poster download:

[The Structure & Functions of Mitochondria.pdf](#)

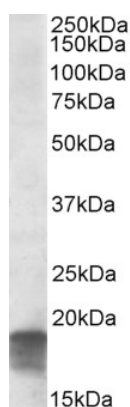
#### Research Area

Metabolism antibody

#### Calculated Mw

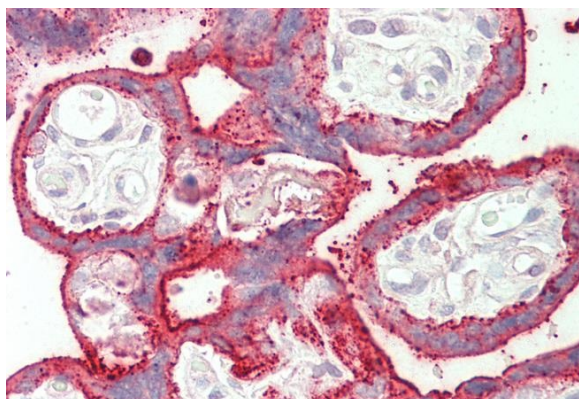
13 kDa

## Images



ARG65002 anti-SDHAF1 antibody WB image

Western Blot: Human Cerebellum lysate (35 µg protein in RIPA buffer) stained with ARG65002 anti-SDHAF1 antibody at 0.3 µg/ml dilution.



ARG65002 anti-SDHAF1 antibody IHC-P image

Immunohistochemistry: Paraffin-embedded Human placenta tissue. Antigen Retrieval: Steam tissue section in Citrate buffer (pH 6.0). The tissue section was stained with ARG65002 anti-SDHAF1 antibody at 5 µg/ml dilution followed by AP-staining.