

ARG65015 anti-GGCX antibody

Package: 100 µg
Store at: -20°C

Summary

Product Description	Goat Polyclonal antibody recognizes GGCX
Tested Reactivity	Hu
Predict Reactivity	Dog
Tested Application	IHC-P, WB
Specificity	This antibody is expected to recognize both isoforms (NP_000812.2; NP_001135741.1).
Host	Goat
Clonality	Polyclonal
Isotype	IgG
Target Name	GGCX
Species	Human
Immunogen	C-PPESNPDPVHSE
Conjugation	Un-conjugated
Alternate Names	EC 4.1.1.90; Vitamin K gamma glutamyl carboxylase; Peptidyl-glutamate 4-carboxylase; Vitamin K-dependent gamma-carboxylase; Gamma-glutamyl carboxylase; VKCFD1

Application Instructions

Application table	Application	Dilution
	IHC-P	5 - 10 µg/ml
	WB	0.3 - 1 µg/ml
Application Note	IHC-P: Antigen Retrieval: Steam tissue section in Citrate buffer (pH 6.0). WB: Recommend incubate at RT for 1h. * The dilutions indicate recommended starting dilutions and the optimal dilutions or concentrations should be determined by the scientist.	

Properties

Form	Liquid
Purification	Purified from goat serum by antigen affinity chromatography.
Buffer	Tris saline (pH 7.3), 0.02% Sodium azide and 0.5% BSA.
Preservative	0.02% Sodium azide
Stabilizer	0.5% BSA
Concentration	0.5 mg/ml
Storage instruction	For continuous use, store undiluted antibody at 2-8°C for up to a week. For long-term storage, aliquot and store at -20°C or below. Storage in frost free freezers is not recommended. Avoid repeated

freeze/thaw cycles. Suggest spin the vial prior to opening. The antibody solution should be gently mixed before use.

Note For laboratory research only, not for drug, diagnostic or other use.

Bioinformation

Database links [GeneID: 2677 Human](#)

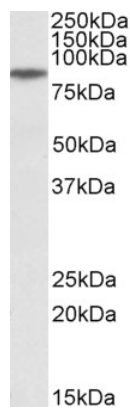
[Swiss-port # P38435 Human](#)

Background This gene encodes an enzyme which catalyzes the posttranslational modification of vitamin K-dependent protein. Many of these vitamin K-dependent proteins are involved in coagulation so the function of the encoded enzyme is essential for hemostasis. Mutations in this gene are associated with vitamin K-dependent coagulation defect and PXE-like disorder with multiple coagulation factor deficiency. Multiple transcript variants encoding different isoforms have been found for this gene.[provided by RefSeq, Nov 2008]

Research Area Cell Biology and Cellular Response antibody

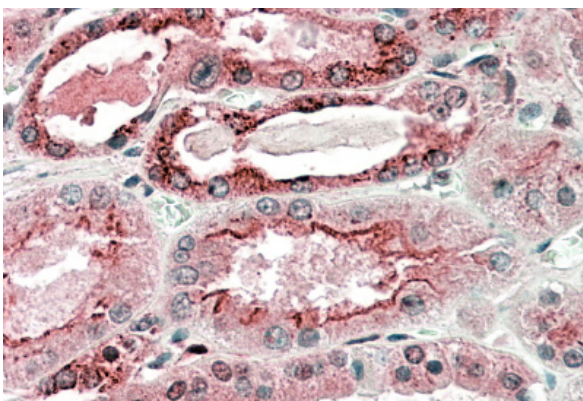
Calculated Mw 88 kDa

Images



ARG65015 anti-GG CX antibody WB image

Western Blot: Human Muscle lysate (35 µg protein in RIPA buffer) stained with ARG65015 anti-GG CX antibody at 0.3 µg/ml dilution.



ARG65015 anti-GG CX antibody IHC-P image

Immunohistochemistry: paraffin embedded Human Kidney. (Steamed antigen retrieval with citrate buffer pH 6) stained with ARG65015 anti-GG CX antibody at 5 µg/ml dilution followed by AP-staining.