

ARG65030 anti-TET2 antibody

Package: 100 µg
Store at: -20°C

Summary

| | |
|---------------------|--|
| Product Description | Goat Polyclonal antibody recognizes TET2 |
| Tested Reactivity | Hu |
| Predict Reactivity | Ms, Dog |
| Tested Application | IHC-P |
| Specificity | This antibody is expected to recognize both reported isoforms (NP_001120680.1; NP_060098.3). |
| Host | Goat |
| Clonality | Polyclonal |
| Isotype | IgG |
| Target Name | TET2 |
| Species | Human |
| Immunogen | C-PPQSNNDQQREGSF |
| Conjugation | Un-conjugated |
| Alternate Names | MDS; KIAA1546; EC 1.14.11.n2; Methylcytosine dioxygenase TET2 |

Application Instructions

| | | |
|-------------------|--|-------------|
| Application table | Application | Dilution |
| | IHC-P | 2 - 6 µg/ml |
| Application Note | IHC-P: Antigen Retrieval: Steam tissue section in Citrate buffer (pH 6.0). * The dilutions indicate recommended starting dilutions and the optimal dilutions or concentrations should be determined by the scientist. | |

Properties

| | |
|---------------------|--|
| Form | Liquid |
| Purification | Purified from goat serum by antigen affinity chromatography. |
| Buffer | Tris saline (pH 7.3), 0.02% Sodium azide and 0.5% BSA. |
| Preservative | 0.02% Sodium azide |
| Stabilizer | 0.5% BSA |
| Concentration | 0.5 mg/ml |
| Storage instruction | For continuous use, store undiluted antibody at 2-8°C for up to a week. For long-term storage, aliquot and store at -20°C or below. Storage in frost free freezers is not recommended. Avoid repeated freeze/thaw cycles. Suggest spin the vial prior to opening. The antibody solution should be gently mixed before use. |

Note

For laboratory research only, not for drug, diagnostic or other use.

Bioinformation

Database links

[GeneID: 54790 Human](#)

[Swiss-port # Q6N021 Human](#)

Background

The protein encoded by this gene is a methylcytosine dioxygenase that catalyzes the conversion of methylcytosine to 5-hydroxymethylcytosine. The encoded protein is involved in myelopoiesis, and defects in this gene have been associated with several myeloproliferative disorders. Two variants encoding different isoforms have been found for this gene. [provided by RefSeq, Mar 2011]

Research Area

Gene Regulation antibody

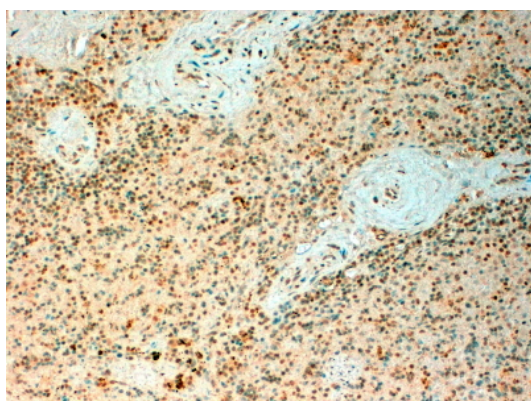
Calculated Mw

224 kDa

PTM

May be glycosylated. It is unclear whether interaction with OGT leads to GlcNAcylation. According to a report, it is not GlcNAcylated by OGT (PubMed:23353889). In contrast, another group reports GlcNAcylation by OGT in mouse ortholog.

Images



ARG65030 anti-TET2 antibody IHC-P image

Immunohistochemistry: paraffin embedded Human Spleen. (Steamed antigen retrieval with citrate buffer pH 6) stained with ARG65030 anti-TET2 antibody at 4 µg/ml dilution followed by HRP-staining.