

ARG65088 anti-PEBP4 antibody

Package: 100 µg
Store at: -20°C

Summary

| | |
|---------------------|---|
| Product Description | Goat Polyclonal antibody recognizes PEBP4 |
| Tested Reactivity | Hu |
| Tested Application | IHC-P, WB |
| Host | Goat |
| Clonality | Polyclonal |
| Isotype | IgG |
| Target Name | PEBP4 |
| Species | Human |
| Immunogen | C-RERASEPKHKNQAE |
| Conjugation | Un-conjugated |
| Alternate Names | Protein cousin-of-RKIP 1; PRO4408; Phosphatidylethanolamine-binding protein 4; GWTM1933; CORK-1; CORK1; PEBP-4; HEL-S-300; hPEBP4 |

Application Instructions

| Application table | Application | Dilution |
|-------------------|---|--------------|
| | IHC-P | 5 - 10 µg/ml |
| | WB | 1 - 3 µg/ml |
| Application Note | IHC-P: Antigen Retrieval: Microwaved tissue section in Tris/EDTA buffer (pH 9.0). WB: Recommend incubate at RT for 1h. * The dilutions indicate recommended starting dilutions and the optimal dilutions or concentrations should be determined by the scientist. | |

Properties

| | |
|---------------------|--|
| Form | Liquid |
| Purification | Purified from goat serum by antigen affinity chromatography. |
| Buffer | Tris saline (pH 7.3), 0.02% Sodium azide and 0.5% BSA. |
| Preservative | 0.02% Sodium azide |
| Stabilizer | 0.5% BSA |
| Concentration | 0.5 mg/ml |
| Storage instruction | For continuous use, store undiluted antibody at 2-8°C for up to a week. For long-term storage, aliquot and store at -20°C or below. Storage in frost free freezers is not recommended. Avoid repeated freeze/thaw cycles. Suggest spin the vial prior to opening. The antibody solution should be gently mixed before use. |

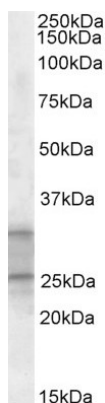
Note

For laboratory research only, not for drug, diagnostic or other use.

Bioinformation

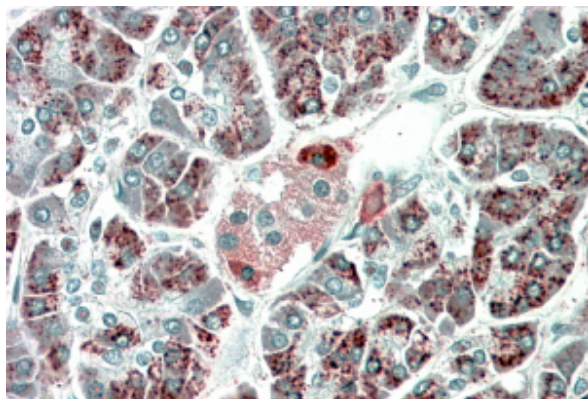
| | |
|----------------|--|
| Database links | GeneID: 157310 Human Swiss-port # Q96S96 Human |
| Background | The phosphatidylethanolamine (PE)-binding proteins, including PEBP4, are an evolutionarily conserved family of proteins with pivotal biologic functions, such as lipid binding and inhibition of serine proteases (Wang et al., 2004 [PubMed 15302887]).[supplied by OMIM, Dec 2008] |
| Research Area | Gene Regulation antibody; Metabolism antibody; Signaling Transduction antibody |
| Calculated Mw | 26 kDa |

Images



ARG65088 anti-PEBP4 antibody WB image

Western Blot: Human Heart lysate (35 µg protein in RIPA buffer) stained with ARG65088 anti-PEBP4 antibody at 1 µg/ml dilution.



ARG65088 anti-PEBP4 antibody IHC-P image

Immunohistochemistry: paraffin embedded Human Pancreas. (Microwaved antigen retrieval with Tris/EDTA buffer pH9) stained with ARG65088 anti-PEBP4 antibody at 5 µg/ml dilution followed by HRP-staining.