

ARG65161 anti-Mesothelin antibody

Package: 100 µg
Store at: -20°C

Summary

Product Description	Goat Polyclonal antibody recognizes Mesothelin
Tested Reactivity	Hu
Tested Application	WB
Specificity	This antibody is expected to recognize isoform 1 and 2 (NP_005814.2; NP_037536.2).
Host	Goat
Clonality	Polyclonal
Isotype	IgG
Target Name	Mesothelin
Species	Human
Immunogen	CPSGKKAREIDES
Conjugation	Un-conjugated
Alternate Names	MPF; Mesothelin; CAK1 antigen; Pre-pro-megakaryocyte-potentiating factor; SMRP

Application Instructions

Application table	Application	Dilution
	WB	0.3 - 1 µg/ml
Application Note	WB: Recommend incubate at RT for 1h. * The dilutions indicate recommended starting dilutions and the optimal dilutions or concentrations should be determined by the scientist.	

Properties

Form	Liquid
Purification	Purified from goat serum by antigen affinity chromatography.
Buffer	Tris saline (pH 7.3), 0.02% Sodium azide and 0.5% BSA.
Preservative	0.02% Sodium azide
Stabilizer	0.5% BSA
Concentration	0.5 mg/ml
Storage instruction	For continuous use, store undiluted antibody at 2-8°C for up to a week. For long-term storage, aliquot and store at -20°C or below. Storage in frost free freezers is not recommended. Avoid repeated freeze/thaw cycles. Suggest spin the vial prior to opening. The antibody solution should be gently mixed before use.
Note	For laboratory research only, not for drug, diagnostic or other use.

Bioinformation

Database links

[GeneID: 10232 Human](#)

[Swiss-port # Q13421 Human](#)

Background

This gene encodes a precursor protein that is cleaved into two products, megakaryocyte potentiating factor and mesothelin. Megakaryocyte potentiation factor functions as a cytokine that can stimulate colony formation in bone marrow megakaryocytes. Mesothelin is a glycosylphosphatidylinositol-anchored cell-surface protein that may function as a cell adhesion protein. This protein is overexpressed in epithelial mesotheliomas, ovarian cancers and in specific squamous cell carcinomas. Alternative splicing results in multiple transcript variants.[provided by RefSeq, Apr 2010]

Research Area

Cancer antibody; Controls and Markers antibody

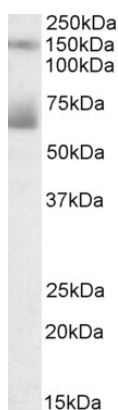
Calculated Mw

69 kDa

PTM

Both MPF and the cleaved form of mesothelin are N-glycosylated.
Proteolytically cleaved by a furin-like convertase to generate megakaryocyte-potentiating factor (MPF), and the cleaved form of mesothelin.

Images



ARG65161 anti-Mesothelin antibody WB image

Western Blot: Human Placenta lysate (35 µg protein in RIPA buffer) stained with ARG65161 anti-MSLN antibody at 0.3 µg/ml dilution.