

## ARG65163 anti-PDE1A antibody

Package: 100 µg  
Store at: -20°C

### Summary

Product Description	Goat Polyclonal antibody recognizes PDE1A
Tested Reactivity	Hu
Predict Reactivity	Ms, Rat, Cow
Tested Application	IHC-P, WB
Specificity	This antibody is expected to recognize isoform 1 (NP_005010.2) only.
Host	Goat
Clonality	Polyclonal
Isotype	IgG
Target Name	PDE1A
Species	Human
Immunogen	C-DLHKNSDLVNAE
Conjugation	Un-conjugated
Alternate Names	CAM-PDE-1A; Cam-PDE 1A; HCAM1; Calcium/calmodulin-dependent 3',5'-cyclic nucleotide phosphodiesterase 1A; EC 3.1.4.17; HSPDE1A; hCam-1; HCAM-1; 61 kDa Cam-PDE

### Application Instructions

Application table	Application	Dilution
	IHC-P	3 - 5 µg/ml
	WB	1 - 3 µg/ml
Application Note	WB: Recommend incubate at RT for 1h. IHC-P: Antigen Retrieval: Steam tissue section in Citrate buffer (pH 6.0). * The dilutions indicate recommended starting dilutions and the optimal dilutions or concentrations should be determined by the scientist.	

### Properties

Form	Liquid
Purification	Purified from goat serum by antigen affinity chromatography.
Buffer	Tris saline (pH 7.3), 0.02% Sodium azide and 0.5% BSA.
Preservative	0.02% Sodium azide
Stabilizer	0.5% BSA
Concentration	0.5 mg/ml
Storage instruction	For continuous use, store undiluted antibody at 2-8°C for up to a week. For long-term storage, aliquot and store at -20°C or below. Storage in frost free freezers is not recommended. Avoid repeated

freeze/thaw cycles. Suggest spin the vial prior to opening. The antibody solution should be gently mixed before use.

#### Note

For laboratory research only, not for drug, diagnostic or other use.

## Bioinformation

#### Database links

[GeneID: 5136 Human](#)

[Swiss-port # P54750 Human](#)

#### Background

Cyclic nucleotide phosphodiesterases (PDEs) play a role in signal transduction by regulating intracellular cyclic nucleotide concentrations through hydrolysis of cAMP and/or cGMP to their respective nucleoside 5-prime monophosphates. Members of the PDE1 family, such as PDE1A, are Ca(2+)/calmodulin (see CALM1; MIM 114180)-dependent PDEs (CaM-PDEs) that are activated by calmodulin in the presence of Ca(2+) (Michibata et al., 2001 [PubMed 11342109]; Fidock et al., 2002 [PubMed 11747989]).[supplied by OMIM, Oct 2009]

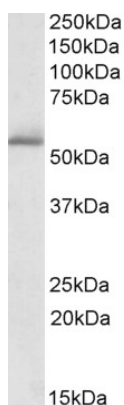
#### Research Area

Signaling Transduction antibody

#### Calculated Mw

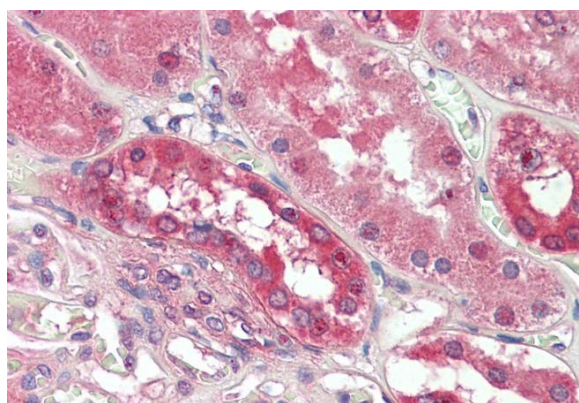
61 kDa

## Images



ARG65163 anti-PDE1A antibody WB image

Western Blot: Human Cerebellum lysate (35 µg protein in RIPA buffer) stained with ARG65163 anti-PDE1A antibody at 1 µg/ml dilution.



ARG65163 anti-PDE1A antibody IHC-P image

Immunohistochemistry: Paraffin-embedded Human kidney tissue. Antigen Retrieval: Steam tissue section in Citrate buffer (pH 6.0). The tissue section was stained with ARG65163 anti-PDE1A antibody at 3.75 µg/ml dilution followed by AP-staining.