

## ARG65188 anti-CD305 / LAIR1 antibody

Package: 100 µg  
Store at: -20°C

### Summary

Product Description	Goat Polyclonal antibody recognizes CD305 / LAIR1
Tested Reactivity	Hu
Tested Application	IHC-P, WB
Specificity	This antibody is expected to recognize both isoforms (NP_002278.1; NP_068352.1).
Host	Goat
Clonality	Polyclonal
Isotype	IgG
Target Name	CD305 / LAIR1
Species	Human
Immunogen	C-NDTEDVSQASPSE
Conjugation	Un-conjugated
Alternate Names	LAIR-1; hLAIR1; CD305; CD antigen CD305; Leukocyte-associated immunoglobulin-like receptor 1

### Application Instructions

Application table	Application	Dilution
	IHC-P	3 - 5 µg/ml
	WB	1 - 3 µg/ml
Application Note	WB: Recommend incubate at RT for 1h. IHC-P: Antigen Retrieval: Steam tissue section in Citrate buffer (pH 6.0). * The dilutions indicate recommended starting dilutions and the optimal dilutions or concentrations should be determined by the scientist.	

### Properties

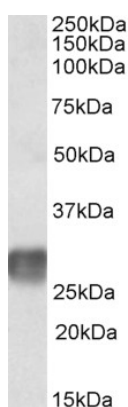
Form	Liquid
Purification	Purified from goat serum by antigen affinity chromatography.
Buffer	Tris saline (pH 7.3), 0.02% Sodium azide and 0.5% BSA.
Preservative	0.02% Sodium azide
Stabilizer	0.5% BSA
Concentration	0.5 mg/ml
Storage instruction	For continuous use, store undiluted antibody at 2-8°C for up to a week. For long-term storage, aliquot and store at -20°C or below. Storage in frost free freezers is not recommended. Avoid repeated freeze/thaw cycles. Suggest spin the vial prior to opening. The antibody solution should be gently mixed before use.

Note For laboratory research only, not for drug, diagnostic or other use.

## Bioinformation

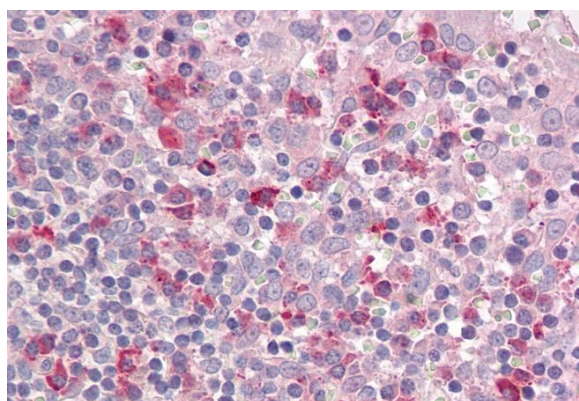
Database links	<a href="#">GeneID: 3903 Human</a> <a href="#">Swiss-port # Q6GTX8 Human</a>
Background	The protein encoded by this gene is an inhibitory receptor found on peripheral mononuclear cells, including NK cells, T cells, and B cells. Inhibitory receptors regulate the immune response to prevent lysis of cells recognized as self. The gene is a member of both the immunoglobulin superfamily and the leukocyte-associated inhibitory receptor family. The gene maps to a region of 19q13.4 called the leukocyte receptor cluster, which contains at least 29 genes encoding leukocyte-expressed receptors of the immunoglobulin superfamily. [provided by RefSeq, Jul 2008]
Research Area	Immune System antibody
Calculated Mw	31 kDa
PTM	Phosphorylation at Tyr-251 and Tyr-281 activates it. May be phosphorylated by LCK. N-glycosylated.

## Images



ARG65188 anti-CD305 / LAIR1 antibody WB image

Western blot: Human Lymph Node lysate (35 µg protein in RIPA buffer) stained with ARG65188 anti-CD305 / LAIR1 antibody at 2 µg/ml dilution.



ARG65188 anti-CD305 / LAIR1 antibody IHC-P image

Immunohistochemistry: Paraffin-embedded Human tonsil tissue. Antigen Retrieval: Steam tissue section in Citrate buffer (pH 6.0). The tissue section was stained with ARG65188 anti-CD305 / LAIR1 antibody at 3.75 µg/ml dilution followed by AP-staining.