

ARG65249
anti-POU6F2 antibodyPackage: 100 µg
Store at: -20°C

Summary

Product Description	Goat Polyclonal antibody recognizes POU6F2
Tested Reactivity	Ms
Predict Reactivity	Hu, Rat, Cow
Tested Application	WB
Specificity	This antibody is expected to recognize both reported isoforms (NP_009183.3; NP_001159490.1).
Host	Goat
Clonality	Polyclonal
Isotype	IgG
Target Name	POU6F2
Species	Human
Immunogen	RSEMNAELRGEDK-C
Conjugation	Un-conjugated
Alternate Names	WTSL; POU domain, class 6, transcription factor 2; Retina-derived POU domain factor 1; WT5; RPF-1

Application Instructions

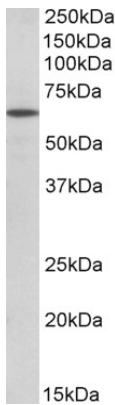
Application table	Application	Dilution
	WB	0.3 - 1 µg/ml
Application Note	WB: Recommend incubate at RT for 1h. * The dilutions indicate recommended starting dilutions and the optimal dilutions or concentrations should be determined by the scientist.	

Properties

Form	Liquid
Purification	Purified from goat serum by antigen affinity chromatography.
Buffer	Tris saline (pH 7.3), 0.02% Sodium azide and 0.5% BSA.
Preservative	0.02% Sodium azide
Stabilizer	0.5% BSA
Concentration	0.5 mg/ml
Storage instruction	For continuous use, store undiluted antibody at 2-8°C for up to a week. For long-term storage, aliquot and store at -20°C or below. Storage in frost free freezers is not recommended. Avoid repeated freeze/thaw cycles. Suggest spin the vial prior to opening. The antibody solution should be gently mixed before use.

Note	For laboratory research only, not for drug, diagnostic or other use.
Bioinformation	
Database links	GeneID: 218030 Mouse Swiss-port # Q8BJI4 Mouse
Background	This gene encodes a member of the POU protein family characterized by the presence of a bipartite DNA binding domain, consisting of a POU-specific domain and a homeodomain, separated by a variable polylinker. The DNA binding domain may bind to DNA as monomers or as homo- and/or heterodimers, in a sequence-specific manner. The POU family members are transcriptional regulators, many of which are known to control cell type-specific differentiation pathways. This gene is a tumor suppressor involved in Wilms tumor (WT) predisposition. Alternatively spliced transcript variants encoding distinct isoforms have been found for this gene.[provided by RefSeq, Oct 2009]
Research Area	Cancer antibody; Gene Regulation antibody
Calculated Mw	73 kDa

Images



ARG65249 anti-POU6F2 antibody WB image

Western Blot: Mouse Eye lysate (35 µg protein in RIPA buffer) stained with ARG65249 anti-POU6F2 antibody at 0.3 µg/ml dilution.