

ARG65273 anti-IGF2BP1 / IMP1 antibody

Package: 100 µg
Store at: -20°C

Summary

Product Description	Goat Polyclonal antibody recognizes IGF2BP1 / IMP1.
Tested Reactivity	Hu
Predict Reactivity	Ms, Rat, Cow, Dog
Tested Application	IHC-P, WB
Specificity	This antibody is expected to recognize both reported isoforms (NP_006537.3; NP_001153895.1).
Host	Goat
Clonality	Polyclonal
Isotype	IgG
Target Name	IGF2BP1 / IMP1
Species	Human
Immunogen	C-EKVFAEHKISYSGQ
Conjugation	Un-conjugated
Alternate Names	VICKZ1; CRDBP; IMP1; IMP-1; ZBP-1; ZBP1; CRD-BP; VICKZ family member 1; IGF2 mRNA-binding protein 1; IGF-II mRNA-binding protein 1; Zipcode-binding protein 1; Coding region determinant-binding protein; Insulin-like growth factor 2 mRNA-binding protein 1

Application Instructions

Application table	Application	Dilution
	IHC-P	3 - 5 µg/ml
	WB	0.3 - 1 µg/ml
Application Note	WB: Recommend incubate at RT for 1h. IHC-P: Antigen Retrieval: Steam tissue section in Citrate buffer (pH 6.0). * The dilutions indicate recommended starting dilutions and the optimal dilutions or concentrations should be determined by the scientist.	

Properties

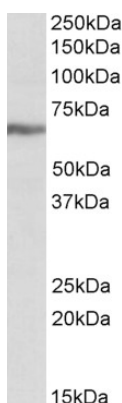
Form	Liquid
Purification	Purified from goat serum by antigen affinity chromatography.
Buffer	Tris saline (pH 7.3), 0.02% Sodium azide and 0.5% BSA.
Preservative	0.02% Sodium azide
Stabilizer	0.5% BSA
Concentration	0.5 mg/ml

Storage instruction	For continuous use, store undiluted antibody at 2-8°C for up to a week. For long-term storage, aliquot and store at -20°C or below. Storage in frost free freezers is not recommended. Avoid repeated freeze/thaw cycles. Suggest spin the vial prior to opening. The antibody solution should be gently mixed before use.
Note	For laboratory research only, not for drug, diagnostic or other use.

Bioinformation

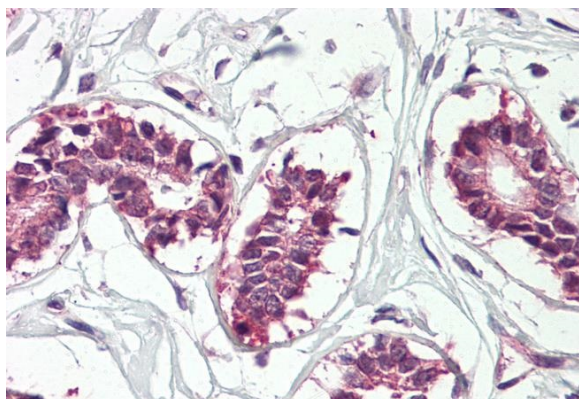
Database links	GeneID: 10642 Human Swiss-port # Q9NZI8 Human
Background	This gene encodes a member of the insulin-like growth factor 2 mRNA-binding protein family. The protein encoded by this gene contains four K homology domains and two RNA recognition motifs. It functions by binding to the mRNAs of certain genes, including insulin-like growth factor 2, beta-actin and beta-transducin repeat-containing protein, and regulating their translation. Two transcript variants encoding different isoforms have been found for this gene. [provided by RefSeq, May 2009]
Highlight	Related news: m6A reader YTHDF2 in mRNA decay and aggresome formation;
Research Area	Gene Regulation antibody
Calculated Mw	63 kDa
PTM	Phosphorylated. Phosphorylation may impair association with ACTB mRNA and hence abolishes translational repression (By similarity).

Images



ARG65273 anti-IGF2BP1 / IMP1 antibody WB image

Western Blot: K562 lysate (35 µg protein in RIPA buffer) stained with ARG65273 anti-IGF2BP1 / IMP1 antibody at 0.3 µg/ml dilution.



ARG65273 anti-IGF2BP1 / IMP1 antibody IHC-P image

Immunohistochemistry: Paraffin-embedded Human breast tissue. Antigen Retrieval: Steam tissue section in Citrate buffer (pH 6.0). The tissue section was stained with ARG65273 anti-IGF2BP1 / IMP1 antibody at 3.75 µg/ml dilution followed by AP-staining.